

## Phe-Met-Arg-Phe Like Peptide acetate

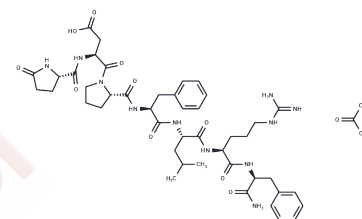
### Chemical Properties

CAS No. :

Formula: C46H65N11O12

Molecular Weight: 964.07

Storage: Keep away from moisture  
Powder: -20°C for 3 years | In solvent: -80°C for 1 year  
Actual storage temperature shall be subject to the COA.



### Biological Description

Description	Phe-Met-Arg-Phe Like Peptide acetate (Pqdplrfamide acetate) is a FMRF-like peptide from visceral and somatic muscles of the snail <i>Helix aspersa</i> . FMRF (Phe-Met-Arg-Phe) is a neuropeptide peptide consisting of 4 amino acid residues.
Targets(IC50)	Others

### Solubility Information

Solubility	DMSO: 10 mM, Sonication is recommended. (< 1 mg/ml refers to the product slightly soluble or insoluble)
------------	--

### Preparing Stock Solutions

	1mg	5mg	10mg
1 mM	1.0373 mL	5.1863 mL	10.3727 mL
5 mM	0.2075 mL	1.0373 mL	2.0745 mL
10 mM	0.1037 mL	0.5186 mL	1.0373 mL
50 mM	0.0207 mL	0.1037 mL	0.2075 mL

Please select the appropriate solvent to prepare the stock solution, according to the solubility of the product in different solvents. Please use it as soon as possible.

Note: The dilution table applies only to solid products. For liquid products, please calculate the stock solution based on the stated concentration and/or density.

### Reference

Lehman HK, et al. The actions of FMRFamide-like peptides on visceral and somatic muscles of the snail *Helix aspersa*. *J Exp Biol.* 1987 Sep;131:55-68.

**Inhibitor · Natural Compounds · Compound Libraries · Recombinant Proteins**

This product is for Research Use Only · Not for Human or Veterinary or Therapeutic Use

Tel:781-999-4286 E\_mail:info@targetmol.com Address:34 Washington Street,Wellesley Hills,MA 02481