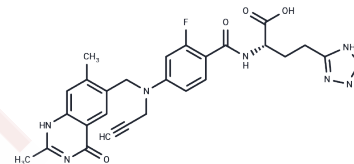


Plevitrexed

Chemical Properties

CAS No. :	153537-73-6
Formula:	C ₂₆ H ₂₅ FN ₈ O ₄
Molecular Weight:	532.53
Storage:	Powder: -20°C for 3 years In solvent: -80°C for 1 year Actual storage temperature shall be subject to the COA.



Biological Description

Description	Plevitrexed is taken up via the α -folate receptor as well as the reduced folate carrier. Plevitrexed is an orally active and effective thymidylate synthase (TS) inhibitor (K _i : 0.44 nM). Plevitrexed is used for gastric cancer in clinical.
Targets(IC ₅₀)	Others,DNA/RNA Synthesis
In vitro	ZD9331 suppresses the transport of [3H]-methotrexate into L1210 and W1L2 cells (K _i : ~ 1 μ M)[3].

Preparing Stock Solutions

	1mg	5mg	10mg
1 mM	1.8778 mL	9.3891 mL	18.7783 mL
5 mM	0.3756 mL	1.8778 mL	3.7557 mL
10 mM	0.1878 mL	0.9389 mL	1.8778 mL
50 mM	0.0376 mL	0.1878 mL	0.3756 mL

Please select the appropriate solvent to prepare the stock solution, according to the solubility of the product in different solvents. Please use it as soon as possible.

Note: The dilution table applies only to solid products. For liquid products, please calculate the stock solution based on the stated concentration and/or density.

Reference

Tochowicz A, et al. Development and binding mode assessment of N-[4-[2-propyn-1-yl][(6S)-4,6,7,8-tetrahydro-2-(hydroxymethyl)-4-oxo-3H-cyclopenta[g]quinazolin-6-yl]amino]benzoyl]-L- γ -glutamyl-D-glutamic acid (BGC 945), a novel thymidylate synthase inhibitor that targets tumor cells. J Med Chem. 2013 Jul 11;56(13):5446-55.

A. Thomas, et al. A phase I/II study of plevitrexed with nutritional vitamin supplementation in gastric cancer.

Marsham PR, et al. Design and synthesis of potent non-polyglutamatable quinazoline antifolate thymidylate synthase inhibitors. J Med Chem. 1999 Sep 23;42(19):3809-20.

Inhibitor · Natural Compounds · Compound Libraries · Recombinant Proteins

This product is for Research Use Only · Not for Human or Veterinary or Therapeutic Use

Tel:781-999-4286 E_mail:info@targetmol.com Address:34 Washington Street,Wellesley Hills,MA 02481