

Aspartame acesulfame

Chemical Properties

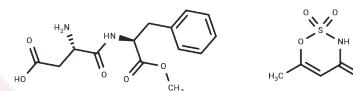
CAS No. : 106372-55-8

Formula: C₁₈H₂₃N₃O₉S

Molecular Weight: 457.45

Storage: Powder: -20°C for 3 years | In solvent: -80°C for 1 year

Actual storage temperature shall be subject to the COA.



Biological Description

Description	Aspartame acesulfame, as an artificial sweetener, is 350 times sweeter than sucrose.
Targets(IC50)	Others

Preparing Stock Solutions

	1mg	5mg	10mg
1 mM	2.186 mL	10.9302 mL	21.8603 mL
5 mM	0.4372 mL	2.186 mL	4.3721 mL
10 mM	0.2186 mL	1.093 mL	2.186 mL
50 mM	0.0437 mL	0.2186 mL	0.4372 mL

Please select the appropriate solvent to prepare the stock solution, according to the solubility of the product in different solvents. Please use it as soon as possible.

Note: The dilution table applies only to solid products. For liquid products, please calculate the stock solution based on the stated concentration and/or density.

Reference

Arora S, Shendurse AM, Sharma V, Wadhwa BK, Singh AK. Assessment of stability of binary sweetener blend (aspartame x acesulfame-K) during storage in whey lemon beverage. *J Food Sci Technol*. 2013 Aug;50(4):770-6. doi: 10.1007/s13197-011-0386-0. Epub 2011 May 5. PubMed PMID: 24425980; PubMed Central PMCID: PMC3671041.

Vistuba JP, Dolzan MD, Vitali L, de Oliveira MA, Micke GA. Sub-minute method for simultaneous determination of aspartame, cyclamate, acesulfame-K and saccharin in food and pharmaceutical samples by capillary zone electrophoresis. *J Chromatogr A*. 2015 May 29;1396:148-52. doi: 10.1016/j.chroma.2015.03.070. Epub 2015 Apr 8. PubMed PMID: 25895731.

Kim JY, Park KH, Kim J, Choi I, Cho KH. Modified high-density lipoproteins by artificial sweetener, aspartame, and saccharin, showed loss of anti-atherosclerotic activity and toxicity in zebrafish. *Cardiovasc Toxicol*. 2015 Jan;15(1):79-89. doi: 10.1007/s12012-014-9273-z. PubMed PMID: 25142179.

Bandyopadhyay A, Ghoshal S, Mukherjee A. Genotoxicity testing of low-calorie sweeteners: aspartame, acesulfame-K, and saccharin. *Drug Chem Toxicol*. 2008;31(4):447-57. doi: 10.1080/01480540802390270 . PubMed PMID: 18850355.

Inhibitor · Natural Compounds · Compound Libraries · Recombinant Proteins

This product is for Research Use Only · Not for Human or Veterinary or Therapeutic Use

Tel:781-999-4286 E_mail:info@targetmol.com Address:34 Washington Street,Wellesley Hills,MA 02481