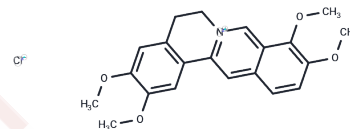


Palmatine chloride

Chemical Properties

| | |
|-------------------|---|
| CAS No. : | 10605-02-4 |
| Formula: | C ₂₁ H ₂₂ ClNO ₄ |
| Molecular Weight: | 387.86 |
| Storage: | Powder: -20°C for 3 years In solvent: -80°C for 1 year Actual storage temperature shall be subject to the COA. |



Biological Description

| | |
|---------------|---|
| Description | Palmatine chloride an isoquinoline alkaloid, is an important medicinal herbal extract with diverse pharmacological and biological properties. |
| Targets(IC50) | Apoptosis, Antibacterial, AChR, Parasite, Aurora Kinase, IDO, Indoleamine 2,3-Dioxygenase (IDO), Virus Protease |

Solubility Information

| | |
|---------------------|--|
| Solubility | DMSO: 31.25 mg/mL (80.57 mM), Sonication is recommended. Ethanol: 12.00 mg/mL (30.94 mM), Sonication is recommended. H ₂ O: 5.00 mg/mL (12.89 mM), Sonication is recommended. (< 1 mg/ml refers to the product slightly soluble or insoluble) |
| In vivo Formulation | 10% DMSO+40% PEG300+5% Tween 80+45% Saline: 1.00 mg/mL (2.58 mM), Sonication is recommended. <i>Please add the solvents sequentially, clarifying the solution as much as possible before adding the next one. Dissolve by heating and/or sonication if necessary. Working solution is recommended to be prepared and used immediately. The formulation provided above is for reference purposes only. In vivo formulations may vary and should be modified based on specific experimental conditions.</i> |

Preparing Stock Solutions

| | 1mg | 5mg | 10mg |
|-------|-----------|------------|------------|
| 1 mM | 2.5782 mL | 12.8912 mL | 25.7825 mL |
| 5 mM | 0.5156 mL | 2.5782 mL | 5.1565 mL |
| 10 mM | 0.2578 mL | 1.2891 mL | 2.5782 mL |
| 50 mM | 0.0516 mL | 0.2578 mL | 0.5156 mL |

Please select the appropriate solvent to prepare the stock solution, according to the solubility of the product in different solvents. Please use it as soon as possible.

Note: The dilution table applies only to solid products. For liquid products, please calculate the stock solution based on the stated concentration and/or density.

Reference

Chen-Wen Xiao, et al. BMC Complement Altern Med. 2015; 15: 177.

Inhibitor · Natural Compounds · Compound Libraries · Recombinant Proteins

This product is for Research Use Only · Not for Human or Veterinary or Therapeutic Use

Tel:781-999-4286 E_mail:info@targetmol.com Address:34 Washington Street,Wellesley Hills,MA 02481