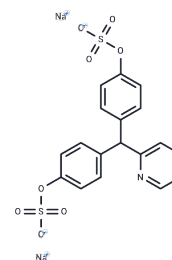


## Sodium Picosulfate

## Chemical Properties

CAS No. :	10040-45-6
Formula:	C <sub>18</sub> H <sub>15</sub> NO <sub>8</sub> S <sub>2</sub> ·2Na
Molecular Weight:	481.41
Storage:	Powder: -20°C for 3 years   In solvent: -80°C for 1 year Actual storage temperature shall be subject to the COA.



## Biological Description

Description	Sodium Picosulfate (Laxoberal) inhibits absorption of water and electrolytes, and increases their secretion.
Targets(IC50)	Others
In vitro	Sodium Picosulfate displays cytotoxic effects on cultured liver cells. 800 and 1600 mg/mL induces dose-dependently vacuolic and fatty change as well as necrosis combined with a lowered mitotic activity and a slight increase in LDH values of the rapidly growing cultured liver cells of rabbit. Comparable but less severe effects are observed in 4-day old liver cell cultures of rat, while liver cells cultured for 6 to 11 days tolerate 1600 mg/mL Sodium Picosulfate. In human liver cultures the number of cells is slightly lowered at 800 and 1600 mg/mL and the number of nuclei in division is decreased dependent on dose. [1]
In vivo	Sodium Picosulphate treatment for long-term has no effects on neuropeptide content of the rat colon. Over a 6-month period, daily doses (10 mg/kg/day) or twice-weekly doses (7.5 mg/kg/day) of Sodium Picosulphate do not affect the level of Vasoactive intestinal polypeptide (VIP), somatostatin, and substance P in mucosa, submucosa, or muscularis externa. [2] Sodium Picosulphate has no major influence on ileal and colonic epithelial cell proliferation. In a 12 weeks study, 10 mg/kg Sodium Picosulphate continuously treatment does not influence the labeling index of Brdu (LI) in the ileum and induces no statistically significant increase of the LI when the treated groups are compared with the control group. The proliferative pattern along the crypts remains unchanged with sodium picosulphate treatment throughout the study. [3] Sodium Picosulphate does not induce chronic changes in colonic motility in rats under long-term treatment. 10 mg/kg/day Sodium Picosulphate pretreated for 23 weeks does not induce any significant change in the duration of long spike bursts (LSB) which are associated with phasic contractions, or in LSB frequency in the fasted state or after a 3-gram meal. [4]

## Solubility Information

Solubility	Ethanol: 3 mg/mL (6.23 mM),Sonication is recommended. H <sub>2</sub> O: 88 mg/mL (182.8 mM),Sonication is recommended. DMSO: 50 mg/mL (103.86 mM),Sonication is recommended. (< 1 mg/ml refers to the product slightly soluble or insoluble)
------------	-------------------------------------------------------------------------------------------------------------------------------------------------------------------------------------------------------------------------------------------------------

In vivo Formulation	10% DMSO+40% PEG300+5% Tween 80+45% Saline: 2 mg/mL (4.15 mM), Sonication is recommended. <i>Please add the solvents sequentially, clarifying the solution as much as possible before adding the next one. Dissolve by heating and/or sonication if necessary. Working solution is recommended to be prepared and used immediately. The formulation provided above is for reference purposes only. In vivo formulations may vary and should be modified based on specific experimental conditions.</i>
---------------------	-----------------------------------------------------------------------------------------------------------------------------------------------------------------------------------------------------------------------------------------------------------------------------------------------------------------------------------------------------------------------------------------------------------------------------------------------------------------------------------------------------------

Preparing Stock Solutions

	1mg	5mg	10mg
1 mM	2.0772 mL	10.3862 mL	20.7723 mL
5 mM	0.4154 mL	2.0772 mL	4.1545 mL
10 mM	0.2077 mL	1.0386 mL	2.0772 mL
50 mM	0.0415 mL	0.2077 mL	0.4154 mL

Please select the appropriate solvent to prepare the stock solution, according to the solubility of the product in different solvents. Please use it as soon as possible.

Note: The dilution table applies only to solid products. For liquid products, please calculate the stock solution based on the stated concentration and/or density.

Reference

- Nishikawa J, et al. Arzneimittelforschung, 1981, 31(2), 321-325.
- Tzavella K, et al. Eur J Gastroenterol Hepatol, 1995, 7(1), 13-20.
- Geboes K, et al. Pharmacology, 1993, 47 Suppl 1, 187-195.
- Fioramonti J, et al. Pharmacology, 1993, 47 Suppl 1, 155-161.

**Inhibitor · Natural Compounds · Compound Libraries · Recombinant Proteins**

This product is for Research Use Only · Not for Human or Veterinary or Therapeutic Use

Tel: 781-999-4286 E\_mail: info@targetmol.com Address: 34 Washington Street, Wellesley Hills, MA 02481