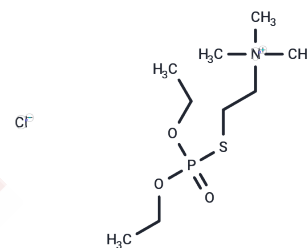


## Echothiophate chloride

## Chemical Properties

CAS No. :	120087-68-5
Formula:	C <sub>9</sub> H <sub>23</sub> ClNO <sub>3</sub> PS
Molecular Weight:	291.7708
Storage:	Powder: -20°C for 3 years   In solvent: -80°C for 1 year Actual storage temperature shall be subject to the COA.



## Biological Description

Description	Echothiophate is a potent, long-acting cholinesterase inhibitor used as a miotic in the treatment of glaucoma. Echothiophate covalently binds by its phosphate group to serine group at the active site of the cholinesterase. Once bound, the enzyme is permanently inactive and the cell has to make new enzymes. Echothiophate binds irreversibly to cholinesterase. Because of the very slow rate at which echothiophate is hydrolyzed by cholinesterase, its effects can last a week or more. It is used as an ocular antihypertensive in the treatment of chronic glaucoma and, in some cases, accommodative esotropia.
Targets(IC50)	Others,Cholinesterase (ChE)

## Preparing Stock Solutions

	1mg	5mg	10mg
1 mM	3.4274 mL	17.1368 mL	34.2736 mL
5 mM	0.6855 mL	3.4274 mL	6.8547 mL
10 mM	0.3427 mL	1.7137 mL	3.4274 mL
50 mM	0.0685 mL	0.3427 mL	0.6855 mL

Please select the appropriate solvent to prepare the stock solution, according to the solubility of the product in different solvents. Please use it as soon as possible.

Note: The dilution table applies only to solid products. For liquid products, please calculate the stock solution based on the stated concentration and/or density.

**Inhibitor · Natural Compounds · Compound Libraries · Recombinant Proteins**

This product is for Research Use Only· Not for Human or Veterinary or Therapeutic Use

Tel:781-999-4286 E\_mail:info@targetmol.com Address:34 Washington Street,Wellesley Hills,MA 02481