

## SELuc-2

## Chemical Properties

CAS No. : 2421112-19-6

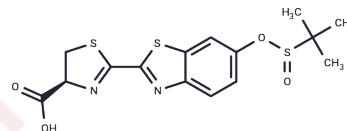
Formula: C<sub>15</sub>H<sub>16</sub>N<sub>2</sub>O<sub>4</sub>S<sub>3</sub>

Molecular Weight: 384.48

Keep away from direct sunlight

Storage: Powder: -20°C for 3 years | In solvent: -80°C for 1 year

Actual storage temperature shall be subject to the COA.



## Biological Description

Description	SELuc-2, a bioluminescent probe derived from firefly luciferin, is designed for the sensitive and selective detection of thiols in living cells.
Targets(IC50)	Others
In vitro	SELuc-2 demonstrates a significantly increased fluorescence intensity at 533 nm upon incubation with cysteine, in contrast to SELuc-1, reaching saturation after 25 minutes[1].

## Preparing Stock Solutions

	1mg	5mg	10mg
1 mM	2.6009 mL	13.0046 mL	26.0092 mL
5 mM	0.5202 mL	2.6009 mL	5.2018 mL
10 mM	0.2601 mL	1.3005 mL	2.6009 mL
50 mM	0.052 mL	0.2601 mL	0.5202 mL

Please select the appropriate solvent to prepare the stock solution, according to the solubility of the product in different solvents. Please use it as soon as possible.

Note: The dilution table applies only to solid products. For liquid products, please calculate the stock solution based on the stated concentration and/or density.

## Reference

Mayu Hemmi, et al. Highly Sensitive Bioluminescent Probe for Thiol Detection in Living Cells. Chem Asian J. 2018 Mar 16;13(6):648-655.

**Inhibitor · Natural Compounds · Compound Libraries · Recombinant Proteins**

This product is for Research Use Only · Not for Human or Veterinary or Therapeutic Use

Tel:781-999-4286 E\_mail:info@targetmol.com Address:34 Washington Street,Wellesley Hills,MA 02481