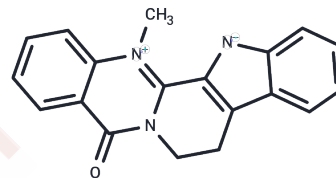


Dehydroevodiamine

Chemical Properties

CAS No. :	67909-49-3
Formula:	C ₁₉ H ₁₅ N ₃ O
Molecular Weight:	301.34
Storage:	Powder: -20°C for 3 years In solvent: -80°C for 1 year Actual storage temperature shall be subject to the COA.



Biological Description

Description	Dehydroevodiamine (DHED), a constituent of <i>Evodia rutaecarpa</i> , has various biological effects such as hypotensive, negative chronotropic, ion channel depressant, inhibition of nitric oxide production and cerebral blood flow enhancing activities.
Targets(IC50)	NF-κB, NO Synthase, COX, PGE Synthase

Solubility Information

Solubility	DMSO: 16.67 mg/mL (55.32 mM), Sonication is recommended. (< 1 mg/ml refers to the product slightly soluble or insoluble)
In vivo Formulation	10% DMSO+90% Saline: 1 mg/mL (3.32 mM), Sonication is recommended. <i>Please add the solvents sequentially, clarifying the solution as much as possible before adding the next one. Dissolve by heating and/or sonication if necessary. Working solution is recommended to be prepared and used immediately. The formulation provided above is for reference purposes only. In vivo formulations may vary and should be modified based on specific experimental conditions.</i>

Preparing Stock Solutions

	1mg	5mg	10mg
1 mM	3.3185 mL	16.5926 mL	33.1851 mL
5 mM	0.6637 mL	3.3185 mL	6.637 mL
10 mM	0.3319 mL	1.6593 mL	3.3185 mL
50 mM	0.0664 mL	0.3319 mL	0.6637 mL

Please select the appropriate solvent to prepare the stock solution, according to the solubility of the product in different solvents. Please use it as soon as possible.

Note: The dilution table applies only to solid products. For liquid products, please calculate the stock solution based on the stated concentration and/or density.

Reference

Loh S H , Tsai Y T , Lee C Y , et al. Antiarrhythmic effects of dehydroevodiamine in isolated human myocardium and cardiomyocytes[J]. Journal of Ethnopharmacology, 2014, 153(3):753-762.

Inhibitor · Natural Compounds · Compound Libraries · Recombinant Proteins

This product is for Research Use Only· Not for Human or Veterinary or Therapeutic Use

Tel:781-999-4286 E_mail:info@targetmol.com Address:34 Washington Street,Wellesley Hills,MA 02481