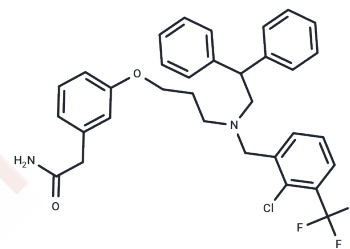


GW6340

Chemical Properties

CAS No. : 405910-78-3
 Formula: C₃₃H₃₂ClF₃N₂O₂
 Molecular Weight: 581.07
 Storage: Powder: -20°C for 3 years | In solvent: -80°C for 1 year
 Actual storage temperature shall be subject to the COA.



Biological Description

Description	GW6340 is a selective LXR agonist with potential anticancer activity that promotes macrophage reverse cholesterol transport (mRCT) and can be used to study atherosclerosis.
Targets(IC50)	Liver X Receptor

Solubility Information

Solubility	DMSO: 80 mg/mL (137.68 mM),Sonication is recommended. (< 1 mg/ml refers to the product slightly soluble or insoluble)
In vivo Formulation	10% DMSO+40% PEG300+5% Tween 80+45% Saline: 3.3 mg/mL (5.68 mM),Sonication is recommended. <i>Please add the solvents sequentially, clarifying the solution as much as possible before adding the next one. Dissolve by heating and/or sonication if necessary. Working solution is recommended to be prepared and used immediately. The formulation provided above is for reference purposes only. In vivo formulations may vary and should be modified based on specific experimental conditions.</i>

Preparing Stock Solutions

	1mg	5mg	10mg
1 mM	1.721 mL	8.6048 mL	17.2096 mL
5 mM	0.3442 mL	1.721 mL	3.4419 mL
10 mM	0.1721 mL	0.8605 mL	1.721 mL
50 mM	0.0344 mL	0.1721 mL	0.3442 mL

Please select the appropriate solvent to prepare the stock solution, according to the solubility of the product in different solvents. Please use it as soon as possible.

Note: The dilution table applies only to solid products. For liquid products, please calculate the stock solution based on the stated concentration and/or density.

Reference

Yasuda T, et al. Tissue-specific liver X receptor activation promotes macrophage reverse cholesterol transport in vivo. *Arterioscler Thromb Vasc Biol.* 2010 Apr;30(4):781-6.

Inhibitor · Natural Compounds · Compound Libraries · Recombinant Proteins

This product is for Research Use Only · Not for Human or Veterinary or Therapeutic Use

Tel:781-999-4286 E_mail:info@targetmol.com Address:34 Washington Street,Wellesley Hills,MA 02481