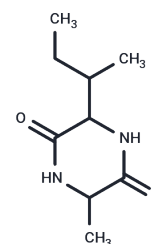


## Cyclo(Ile-Ala)

## Chemical Properties

CAS No. :	90821-99-1
Formula:	C <sub>9</sub> H <sub>16</sub> N <sub>2</sub> O <sub>2</sub>
Molecular Weight:	184.24
Storage:	Powder: -20°C for 3 years   In solvent: -80°C for 1 year Actual storage temperature shall be subject to the COA.



## Biological Description

Description	Helicin is a syrB inducer found in the Rosaceae family. Helicin is hydrolyzed by the enzyme BglY.
Targets(IC50)	Others
In vitro	To find the cell cycle inhibitors from the metabolites of Streptomyces flavoretus 18522. METHODS AND RESULTS: Activity-guided isolation was performed on the chloroform extract of the fermentation broth and mycelia of Streptomyces flavoretus 18522 by using ts FT210 cells. Compounds were isolated through various chromatographic methods and elucidated by spectroscopic means. The flow cytometry was used to evaluate the cell cycle inhibiting activity of the fractions and compounds. Six cyclic dipeptides were obtained and identified as cyclo(Ala-Leu)(1), Cyclo(Ile-Ala) (2), cyclo(Ala-Val)(3), cyclo(Phe-Leu)(4), cyclo(Ala-Pro)(5) and cyclo(Phe-Val)(6). CONCLUSIONS: Compounds 1-6 are reported as new cell cycle inhibitors for the first time.

## Solubility Information

Solubility	DMSO: 5.6 mg/mL (30.4 mM), Sonication is recommended. (< 1 mg/ml refers to the product slightly soluble or insoluble)
In vivo Formulation	10% DMSO+40% PEG300+5% Tween 80+45% Saline: 1 mg/mL (5.43 mM), Sonication is recommended. <i>Please add the solvents sequentially, clarifying the solution as much as possible before adding the next one. Dissolve by heating and/or sonication if necessary. Working solution is recommended to be prepared and used immediately. The formulation provided above is for reference purposes only. In vivo formulations may vary and should be modified based on specific experimental conditions.</i>

### Preparing Stock Solutions

---

	1mg	5mg	10mg
1 mM	5.4277 mL	27.1385 mL	54.277 mL
5 mM	1.0855 mL	5.4277 mL	10.8554 mL
10 mM	0.5428 mL	2.7139 mL	5.4277 mL
50 mM	0.1086 mL	0.5428 mL	1.0855 mL

---

Please select the appropriate solvent to prepare the stock solution, according to the solubility of the product in different solvents. Please use it as soon as possible.

Note: The dilution table applies only to solid products. For liquid products, please calculate the stock solution based on the stated concentration and/or density.

### Reference

Cyclic dipeptides as new cell cycle inhibitors produced by *Streptomyces flavoretus* 18522 Journal of Shenyang Pharmaceutical University, 2015 (2) :107 -10.

**Inhibitor · Natural Compounds · Compound Libraries · Recombinant Proteins**

This product is for Research Use Only · Not for Human or Veterinary or Therapeutic Use

Tel:781-999-4286 E\_mail:info@targetmol.com Address:34 Washington Street,Wellesley Hills,MA 02481