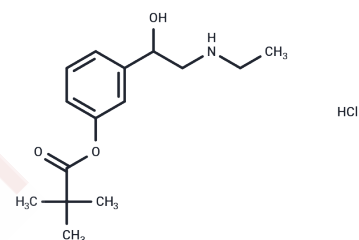


Etilefrine pivalate HCl

Chemical Properties

CAS No. :	42145-91-5
Formula:	C ₁₅ H ₂₄ ClNO ₃
Molecular Weight:	301.81
Storage:	Powder: -20°C for 3 years In solvent: -80°C for 1 year Actual storage temperature shall be subject to the COA.



Biological Description

Description	Etilefrine pivalate HCl is an orally active compound for the treatment of migraine headaches.
Targets(IC50)	Others

Solubility Information

Solubility	DMSO: 50 mg/mL (165.67 mM), Sonication is recommended. (< 1 mg/ml refers to the product slightly soluble or insoluble)
------------	---

Preparing Stock Solutions

	1mg	5mg	10mg
1 mM	3.3133 mL	16.5667 mL	33.1334 mL
5 mM	0.6627 mL	3.3133 mL	6.6267 mL
10 mM	0.3313 mL	1.6567 mL	3.3133 mL
50 mM	0.0663 mL	0.3313 mL	0.6627 mL

Please select the appropriate solvent to prepare the stock solution, according to the solubility of the product in different solvents. Please use it as soon as possible.

Note: The dilution table applies only to solid products. For liquid products, please calculate the stock solution based on the stated concentration and/or density.

Reference

Bayés M, et al. Gateways to clinical trials. Methods Find Exp Clin Pharmacol. 2003;25(7):565-597.

Inhibitor · Natural Compounds · Compound Libraries · Recombinant Proteins

This product is for Research Use Only · Not for Human or Veterinary or Therapeutic Use

Tel:781-999-4286 E_mail:info@targetmol.com Address:34 Washington Street,Wellesley Hills,MA 02481