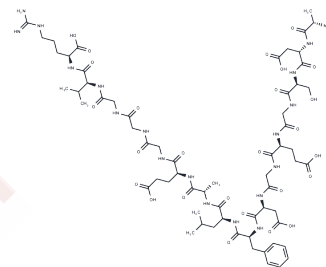


## Fibrinopeptide A, human

## Chemical Properties

CAS No. :	25422-31-5
Formula:	C63H97N19O26
Molecular Weight:	1536.56
Storage:	Keep away from moisture Powder: -20°C for 3 years   In solvent: -80°C for 1 year <small>Actual storage temperature shall be subject to the COA.</small>



## Biological Description

Description	Fibrinopeptide A, human (FPA), is a 16-residue polypeptide cleaved from the N-terminal A $\alpha$ region of fibrinogen by thrombin.
-------------	---

## Solubility Information

Solubility	H2O: Soluble, ( $< 1$ mg/ml refers to the product slightly soluble or insoluble)
------------	---

## Preparing Stock Solutions

	1mg	5mg	10mg
1 mM	0.6508 mL	3.254 mL	6.508 mL
5 mM	0.1302 mL	0.6508 mL	1.3016 mL
10 mM	0.0651 mL	0.3254 mL	0.6508 mL
50 mM	0.013 mL	0.0651 mL	0.1302 mL

Please select the appropriate solvent to prepare the stock solution, according to the solubility of the product in different solvents. Please use it as soon as possible.

Note: The dilution table applies only to solid products. For liquid products, please calculate the stock solution based on the stated concentration and/or density.

## Reference

Riedel T, et al. Fibrinopeptides A and B release in the process of surface fibrin formation. Blood. 2011 Feb 3;117(5):1700-6.

**Inhibitor · Natural Compounds · Compound Libraries · Recombinant Proteins**

This product is for Research Use Only · Not for Human or Veterinary or Therapeutic Use

Tel:781-999-4286 E\_mail:info@targetmol.com Address:34 Washington Street,Wellesley Hills,MA 02481