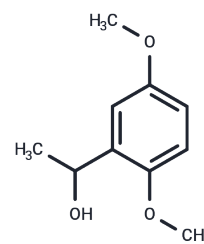


1-(2,5-DIMETHOXYPHENYL)ETHANOL

Chemical Properties

CAS No. :	41038-40-8
Formula:	C ₁₀ H ₁₄ O ₃
Molecular Weight:	182.21
Storage:	Powder: -20°C for 3 years In solvent: -80°C for 1 year <small>Actual storage temperature shall be subject to the COA.</small>



Biological Description

Description	1-(2,5-DIMETHOXYPHENYL)ETHANOL, with CAS No. 41038-40-8, is a fragment molecule that serves as an important scaffold for molecular linking, expansion, and modification. 1-(2,5-DIMETHOXYPHENYL)ETHANOL provides a structural basis and research tool for the design and screening of novel drug candidates, and is commonly used in drug discovery, drug synthesis, and related research.
-------------	--------------------------------------------------------------------------------------------------------------------------------------------------------------------------------------------------------------------------------------------------------------------------------------------------------------------------------------------------------------------------------------------

Preparing Stock Solutions

	1mg	5mg	10mg
1 mM	5.4882 mL	27.4409 mL	54.8817 mL
5 mM	1.0976 mL	5.4882 mL	10.9763 mL
10 mM	0.5488 mL	2.7441 mL	5.4882 mL
50 mM	0.1098 mL	0.5488 mL	1.0976 mL

Please select the appropriate solvent to prepare the stock solution, according to the solubility of the product in different solvents. Please use it as soon as possible.

Note: The dilution table applies only to solid products. For liquid products, please calculate the stock solution based on the stated concentration and/or density.

Inhibitor · Natural Compounds · Compound Libraries · Recombinant Proteins

This product is for Research Use Only · Not for Human or Veterinary or Therapeutic Use

Tel: 781-999-4286 E_mail: info@targetmol.com Address: 34 Washington Street, Wellesley Hills, MA 02481