

## LCKLSL acetate

## Chemical Properties

CAS No. :

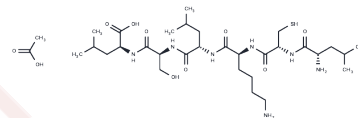
Formula: C32H61N7O10S

Molecular Weight: 735.93

Storage:

Store at low temperature, Keep away from moisture  
 Powder: -20°C for 3 years | In solvent: -80°C for 1 year

Actual storage temperature shall be subject to the COA.



## Biological Description

Description	LCKLSL acetate is a competitive annexin A2 (AnxA2) inhibitor. LCKLSL acetate potently inhibits the binding of tissue plasminogen activator (tPA) to AnxA2 and the generation of plasmin. LCKLSL acetate has anti-angiogenic roles.
Targets(IC50)	Annexin A
In vitro	LCKLSL acetate (0-2 mg) inhibits the generation of plasmin and suppresses the VEGF-induced activity of tPA under hypoxic conditions in human retinal microvascular endothelial cells (RMVECs)[1].
In vivo	In chicken chorioallantoic membrane and murine Matrigel plug assays, LCKLSL acetate significantly decreased the vascular length. LCKLSL acetate(5 µg/mL) significantly decreased the number of vascular branches, junctions and end-points[1].

## Solubility Information

Solubility	H2O: 10 mg/mL (13.59 mM), Sonication is recommended. (< 1 mg/ml refers to the product slightly soluble or insoluble)
------------	---

### Preparing Stock Solutions

---

	<b>1mg</b>	<b>5mg</b>	<b>10mg</b>
1 mM	1.3588 mL	6.7941 mL	13.5882 mL
5 mM	0.2718 mL	1.3588 mL	2.7176 mL
10 mM	0.1359 mL	0.6794 mL	1.3588 mL
50 mM	0.0272 mL	0.1359 mL	0.2718 mL

---

Please select the appropriate solvent to prepare the stock solution, according to the solubility of the product in different solvents. Please use it as soon as possible.

Note: The dilution table applies only to solid products. For liquid products, please calculate the stock solution based on the stated concentration and/or density.

### Reference

Mallika Valapala, et al. A Competitive Hexapeptide Inhibitor of Annexin A2 Prevents Hypoxia-Induced Angiogenic Events. *J Cell Sci.* 2011 May 1;124(Pt 9):1453-64.

**Inhibitor · Natural Compounds · Compound Libraries · Recombinant Proteins**

This product is for Research Use Only · Not for Human or Veterinary or Therapeutic Use

Tel:781-999-4286 E\_mail:info@targetmol.com Address:34 Washington Street,Wellesley Hills,MA 02481