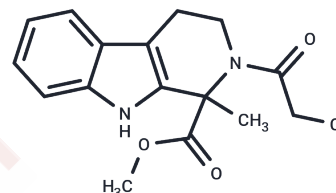


16F16

Chemical Properties

CAS No. : 922507-80-0
 Formula: C₁₆H₁₇ClN₂O₃
 Molecular Weight: 320.77
 Storage: Powder: -20°C for 3 years | In solvent: -80°C for 1 year
Actual storage temperature shall be subject to the COA.



Biological Description

Description	16F16 is a protein disulfide isomerase (PDI) inhibitor. It inhibits PDI reductase activity in an enzyme assay when used at concentrations ranging from 1 to 100 µg/ml. 16F16 reduces PC12 cell apoptosis induced by the misfolded huntingtin protein HTTQ103. It suppresses PDI-dependent mitochondrial outer membrane permeabilization (MOMP) in isolated PC12 cell mitochondria. 16F16 (2, 3, 4, and 10 µM) reduces HTT ^{N90Q73} mutant huntingtin-induced medium spinal neuron death and MOMP in rat corticostriatal slices. It also reduces pyramidal neuron death induced by amyloid-β precursor protein (APP) in rat corticostriatal slices.
Targets(IC50)	Others

Solubility Information

Solubility	DMSO: 10 mg/mL (31.17 mM), Sonication is recommended. (< 1 mg/ml refers to the product slightly soluble or insoluble)
In vivo Formulation	10% DMSO+40% PEG300+5% Tween-80+45% Saline: 1 mg/mL (3.12 mM), Sonication is recommended. <i>Please add the solvents sequentially, clarifying the solution as much as possible before adding the next one. Dissolve by heating and/or sonication if necessary. Working solution is recommended to be prepared and used immediately. The formulation provided above is for reference purposes only. In vivo formulations may vary and should be modified based on specific experimental conditions.</i>

Preparing Stock Solutions

	1mg	5mg	10mg
1 mM	3.1175 mL	15.5875 mL	31.175 mL
5 mM	0.6235 mL	3.1175 mL	6.235 mL
10 mM	0.3117 mL	1.5587 mL	3.1175 mL
50 mM	0.0623 mL	0.3117 mL	0.6235 mL

Please select the appropriate solvent to prepare the stock solution, according to the solubility of the product in different solvents. Please use it as soon as possible.

Note: The dilution table applies only to solid products. For liquid products, please calculate the stock solution based on the stated concentration and/or density.

Reference

Hoffstrom, B.G., Kaplan, A., Letso, R., et al. Inhibitors of protein disulfide isomerase suppress apoptosis induced by misfolded proteins. *Nat. Chem. Biol.* 6(12):900-906(2010)

Inhibitor · Natural Compounds · Compound Libraries · Recombinant Proteins

This product is for Research Use Only · Not for Human or Veterinary or Therapeutic Use

Tel: 781-999-4286 E_mail: info@targetmol.com Address: 34 Washington Street, Wellesley Hills, MA 02481