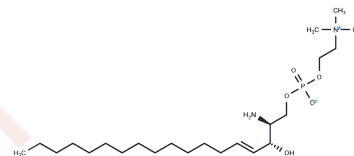


Lysosphingomyelin (d18:1)

Chemical Properties

| | |
|-------------------|---|
| CAS No. : | 1670-26-4 |
| Formula: | C23H49N2O5P |
| Molecular Weight: | 464.628 |
| Storage: | Powder: -20°C for 3 years In solvent: -80°C for 1 year Actual storage temperature shall be subject to the COA. |



Biological Description

| | |
|---------------|---|
| Description | Sphingomyelins are complex membrane lipids composed of phosphorylcholine, sphingosine, and an acylated group, such as a fatty acid. Lysosphingomyelin is a naturally-occurring lipid which is produced by the removal of the acylated group of sphingomyelin by a deacylase. Lysosphingomyelin may, in turn, serve as a substrate for autotaxin, which removes choline to produce sphingosine-1-phosphate. The receptors and signaling pathways that are activated by lyso-sphingosine are diverse and vary between cell types. Lysosphingomyelin occurs naturally in plasma, is a constituent of lipoproteins, and is increased in some diseases, including dermatitis and Niemann-Pick disease. |
| Targets(IC50) | Others,LPL Receptor |

Solubility Information

| | |
|------------|---|
| Solubility | Ethanol: 15 mg/mL (32.28 mM),Sonication is recommended. PBS (pH 7.2): 5 mg/mL (10.76 mM),Sonication is recommended. (< 1 mg/ml refers to the product slightly soluble or insoluble) |
|------------|---|

Preparing Stock Solutions

| | 1mg | 5mg | 10mg |
|-------|-----------|------------|------------|
| 1 mM | 2.1523 mL | 10.7613 mL | 21.5225 mL |
| 5 mM | 0.4305 mL | 2.1523 mL | 4.3045 mL |
| 10 mM | 0.2152 mL | 1.0761 mL | 2.1523 mL |
| 50 mM | 0.043 mL | 0.2152 mL | 0.4305 mL |

Please select the appropriate solvent to prepare the stock solution, according to the solubility of the product in different solvents. Please use it as soon as possible.

Note: The dilution table applies only to solid products. For liquid products, please calculate the stock solution based on the stated concentration and/or density.

Inhibitor · Natural Compounds · Compound Libraries · Recombinant Proteins

This product is for Research Use Only · Not for Human or Veterinary or Therapeutic Use

Tel:781-999-4286 E_mail:info@targetmol.com Address:34 Washington Street,Wellesley Hills,MA 02481