

## Rac GTPase fragment

## Chemical Properties

CAS No. :

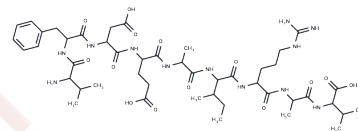
Formula: C46H74N12O14

Molecular Weight: 1019.15

Keep away from moisture

Storage: Powder: -20°C for 3 years | In solvent: -80°C for 1 year

Actual storage temperature shall be subject to the COA.



## Biological Description

Description	Rac GTPase fragment is a peptide with the sequence H2N-Val-Phe-Asp-Glu-Ala-Ile-Arg-Ala-Val-OH, MW= 1019.15. Rac is a subfamily of the Rho family of GTPases, small signaling G proteins (more specifically a GTPase).
Targets(IC50)	Others
In vitro	Rac1 is thought to play a significant role in the development of various cancers, including melanoma (1) and non-small cell lung cancer(2). Rac1 is a small (~21 kDa) signaling G protein (more specifically a GTPase) and is a member of the Rac subfamily of the family Rho family of GTPases. Members of this superfamily appear to regulate a diverse array of cellular events, including the control of cell growth, cytoskeletal reorganization, and the activation of protein kinases Rac1 is a pleiotropic regulator of many cellular processes, including the cell cycle, cell-cell adhesion, motility (through the actin network), and of epithelial differentiation [1][2][3].

## Solubility Information

Solubility	DMSO: ≥101.9 mg/mL, Sonication is recommended. (< 1 mg/ml refers to the product slightly soluble or insoluble)
------------	-------------------------------------------------------------------------------------------------------------------

### Preparing Stock Solutions

---

	<b>1mg</b>	<b>5mg</b>	<b>10mg</b>
1 mM	0.9812 mL	4.906 mL	9.8121 mL
5 mM	0.1962 mL	0.9812 mL	1.9624 mL
10 mM	0.0981 mL	0.4906 mL	0.9812 mL
50 mM	0.0196 mL	0.0981 mL	0.1962 mL

---

Please select the appropriate solvent to prepare the stock solution, according to the solubility of the product in different solvents. Please use it as soon as possible.

Note: The dilution table applies only to solid products. For liquid products, please calculate the stock solution based on the stated concentration and/or density.

**Inhibitor · Natural Compounds · Compound Libraries · Recombinant Proteins**

This product is for Research Use Only · Not for Human or Veterinary or Therapeutic Use

Tel:781-999-4286 E\_mail:info@targetmol.com Address:34 Washington Street,Wellesley Hills,MA 02481