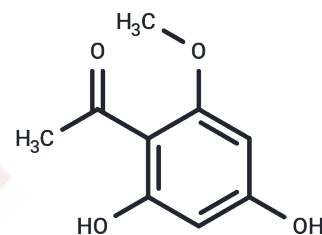


## 2',4'-Dihydroxy-6'-methoxyacetophenone

## Chemical Properties

CAS No. :	3602-54-8
Formula:	C <sub>9</sub> H <sub>10</sub> O <sub>4</sub>
Molecular Weight:	182.17
Storage:	Keep away from direct sunlight Powder: -20°C for 3 years   In solvent: -80°C for 1 year <small>Actual storage temperature shall be subject to the COA.</small>



## Biological Description

Description	2',4'-Dihydroxy-6'-methoxyacetophenone is a phenolic acetophenone extracted from Leguminosae and Asteraceae with antimicrobial activity and can be used in the synthesis of pyran-sickle.
Targets(IC50)	Antibacterial,Parasite
In vitro	2',4'-Dihydroxy-6'-methoxyacetophenone is a phenolic acetophenone derivative derived from Artemisia annua, and is a analog of artemisinin effective in treating malaria[1].

## Preparing Stock Solutions

	1mg	5mg	10mg
1 mM	5.4894 mL	27.4469 mL	54.8938 mL
5 mM	1.0979 mL	5.4894 mL	10.9788 mL
10 mM	0.5489 mL	2.7447 mL	5.4894 mL
50 mM	0.1098 mL	0.5489 mL	1.0979 mL

Please select the appropriate solvent to prepare the stock solution, according to the solubility of the product in different solvents. Please use it as soon as possible.

Note: The dilution table applies only to solid products. For liquid products, please calculate the stock solution based on the stated concentration and/or density.

## Reference

Singh AK,et al. Annphenone, a phenolic acetophenone from Artemisia annua. Phytochem. 1997;44:555-7.

**Inhibitor · Natural Compounds · Compound Libraries · Recombinant Proteins**

This product is for Research Use Only · Not for Human or Veterinary or Therapeutic Use

Tel:781-999-4286 E\_mail:info@targetmol.com Address:34 Washington Street,Wellesley Hills,MA 02481