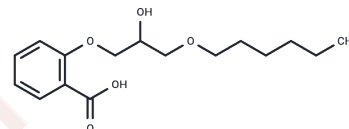


Exiproben

Chemical Properties

CAS No. : 26281-69-6
 Formula: C₁₆H₂₄O₅
 Molecular Weight: 296.36
 Storage: Powder: -20°C for 3 years | In solvent: -80°C for 1 year
 Actual storage temperature shall be subject to the COA.



Biological Description

Description	Exiproben is a biochemical.
Targets(IC50)	Others

Preparing Stock Solutions

	1mg	5mg	10mg
1 mM	3.3743 mL	16.8714 mL	33.7427 mL
5 mM	0.6749 mL	3.3743 mL	6.7485 mL
10 mM	0.3374 mL	1.6871 mL	3.3743 mL
50 mM	0.0675 mL	0.3374 mL	0.6749 mL

Please select the appropriate solvent to prepare the stock solution, according to the solubility of the product in different solvents. Please use it as soon as possible.

Note: The dilution table applies only to solid products. For liquid products, please calculate the stock solution based on the stated concentration and/or density.

Reference

Blattman AN, Beh KJ. T-cell receptor and immunoglobulin gene polymorphisms and resistance to Haemonchus contortus in sheep. J Anim Breed Genet. 1994 Jan 12;111(1-6):65-74. doi: 10.1111/j.1439-0388.1994.tb00438.x. PubMed PMID: 21395753.

Inhibitor · Natural Compounds · Compound Libraries · Recombinant Proteins

This product is for Research Use Only · Not for Human or Veterinary or Therapeutic Use

Tel: 781-999-4286 E_mail: info@targetmol.com Address: 34 Washington Street, Wellesley Hills, MA 02481