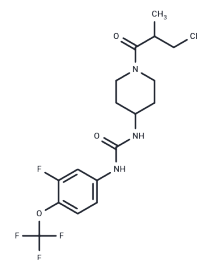


(Rac)-EC5026

## Chemical Properties

CAS No. : 1809885-55-9  
 Formula: C<sub>18</sub>H<sub>23</sub>F<sub>4</sub>N<sub>3</sub>O<sub>3</sub>  
 Molecular Weight: 405.39  
 Storage: Powder: -20°C for 3 years | In solvent: -80°C for 1 year  
 Actual storage temperature shall be subject to the COA.



## Biological Description

|               |   |
|---------------|---|
| Description   | (Rac)-EC5026 ((Rac)-BPN-19186) is a potent piperidine inhibitor of soluble epoxide hydrolase (sEH) with a $K_i$ of 0.06 nM, useful for research on Parkinson's disease and dementia with Lewy Bodies (DLB) [1]. |
| Targets(IC50) | Epoxide Hydrolase   |
| In vitro      | (Rac)-EC5026 is an inhibitor of soluble epoxide hydrolase (sEH) with a $K_i$ of 0.06 nM [1].  |

## Solubility Information

|                     |   |
|---------------------|---|
| Solubility          | DMSO: 10 mg/mL (24.67 mM), Sonication is recommended.<br>( $< 1$ mg/ml refers to the product slightly soluble or insoluble)   |
| In vivo Formulation | 10% DMSO+40% PEG300+5% Tween 80+45% Saline: 1 mg/mL (2.47 mM), Sonication is recommended.<br><i>Please add the solvents sequentially, clarifying the solution as much as possible before adding the next one. Dissolve by heating and/or sonication if necessary. Working solution is recommended to be prepared and used immediately. The formulation provided above is for reference purposes only. In vivo formulations may vary and should be modified based on specific experimental conditions.</i> |

### Preparing Stock Solutions

---

|       | <b>1mg</b> | <b>5mg</b> | <b>10mg</b> |
|-------|------------|------------|-------------|
| 1 mM  | 2.4668 mL  | 12.3338 mL | 24.6676 mL  |
| 5 mM  | 0.4934 mL  | 2.4668 mL  | 4.9335 mL   |
| 10 mM | 0.2467 mL  | 1.2334 mL  | 2.4668 mL   |
| 50 mM | 0.0493 mL  | 0.2467 mL  | 0.4934 mL   |

---

Please select the appropriate solvent to prepare the stock solution, according to the solubility of the product in different solvents. Please use it as soon as possible.

Note: The dilution table applies only to solid products. For liquid products, please calculate the stock solution based on the stated concentration and/or density.

**Inhibitor · Natural Compounds · Compound Libraries · Recombinant Proteins**

This product is for Research Use Only · Not for Human or Veterinary or Therapeutic Use

Tel:781-999-4286 E\_mail:info@targetmol.com Address:34 Washington Street,Wellesley Hills,MA 02481