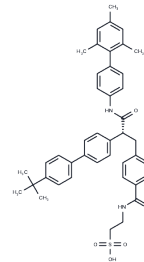


LGD-6972

## Chemical Properties

CAS No. :	1207989-09-0
Formula:	C43H46N2O5S
Molecular Weight:	702.9
Storage:	Store at low temperature Powder: -20°C for 3 years   In solvent: -80°C for 1 year <i>Actual storage temperature shall be subject to the COA.</i>



## Biological Description

Description	LGD-6972 is an antagonist of glucagon receptor.
Targets(IC50)	Glucagon Receptor
In vivo	LGD-6972 is well tolerated at the doses tested without dose-related or clinically meaningful changes in clinical laboratory parameters. No subject experiences hypoglycaemia. LGD-6972 has linear plasma pharmacokinetics consistent with once daily dosing that is comparable in healthy and T2DM subjects. Dose-dependent decreases in fasting plasma glucose are observed in all groups with a maximum of 3.15 mM (56.8 mg/dL) on day 14 in T2DM subjects. LGD-6972 also reduces plasma glucose in the postprandial state. Dose-dependent increases in fasting plasma glucagon are observed, but glucagon levels decrease and insulin levels increase after an oral glucose load in T2DM subjects.

## Solubility Information

Solubility	DMSO: 31 mg/mL (44.1 mM), Sonication is recommended. (< 1 mg/ml refers to the product slightly soluble or insoluble)
In vivo Formulation	10% DMSO+40% PEG300+5% Tween 80+45% Saline: 2 mg/mL (2.85 mM), Sonication is recommended. <i>Please add the solvents sequentially, clarifying the solution as much as possible before adding the next one. Dissolve by heating and/or sonication if necessary. Working solution is recommended to be prepared and used immediately. The formulation provided above is for reference purposes only. In vivo formulations may vary and should be modified based on specific experimental conditions.</i>

### Preparing Stock Solutions

---

	1mg	5mg	10mg
1 mM	1.4227 mL	7.1134 mL	14.2268 mL
5 mM	0.2845 mL	1.4227 mL	2.8454 mL
10 mM	0.1423 mL	0.7113 mL	1.4227 mL
50 mM	0.0285 mL	0.1423 mL	0.2845 mL

---

Please select the appropriate solvent to prepare the stock solution, according to the solubility of the product in different solvents. Please use it as soon as possible.

Note: The dilution table applies only to solid products. For liquid products, please calculate the stock solution based on the stated concentration and/or density.

### Reference

Vajda EG, et al. Pharmacokinetics and pharmacodynamics of single and multiple doses of the glucagon receptor antagonist LGD-6972 in healthy subjects and subjects with type 2 diabetes mellitus. *Diabetes Obes Metab.* 2017 Jan;19(1):24-32.

**Inhibitor · Natural Compounds · Compound Libraries · Recombinant Proteins**

This product is for Research Use Only · Not for Human or Veterinary or Therapeutic Use

Tel:781-999-4286 E\_mail:info@targetmol.com Address:34 Washington Street,Wellesley Hills,MA 02481