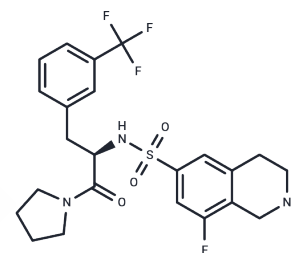


PFI-2

Chemical Properties

CAS No. : 1627676-59-8
 Formula: C₂₃H₂₅F₄N₃O₃S
 Molecular Weight: 499.52
 Storage: Store at low temperature
 Powder: -20°C for 3 years | In solvent: -80°C for 1 year
Actual storage temperature shall be subject to the COA.



Biological Description

Description	PFI-2 is an effective, specific and cell-active lysine methyltransferase SETD7 inhibitor (K _i /IC ₅₀ : 0.33/2 nM), 1000-fold selectivity over other methyltransferases and other non-epigenetic targets.
Targets(IC ₅₀)	Histone Methyltransferase
In vivo	In the cellular environment, through direct interaction with SETD7, PFI-2 affects Yes-associated protein localization in Hippo pathway signaling and the putative phenotype Setd7 gene deletion. The inhibitory activity of (R)-PFI-2 on human SETD7 was 500-fold higher than that of its isomer, (S)-PFI-2.

Solubility Information

Solubility	Ethanol: 66 mg/mL (132.13 mM), Heating is recommended. DMSO: 100 mg/mL (200.19 mM), Sonication is recommended. (< 1 mg/ml refers to the product slightly soluble or insoluble)
------------	--

Preparing Stock Solutions

	1mg	5mg	10mg
1 mM	2.0019 mL	10.0096 mL	20.0192 mL
5 mM	0.4004 mL	2.0019 mL	4.0038 mL
10 mM	0.2002 mL	1.001 mL	2.0019 mL
50 mM	0.040 mL	0.2002 mL	0.4004 mL

Please select the appropriate solvent to prepare the stock solution, according to the solubility of the product in different solvents. Please use it as soon as possible.

Note: The dilution table applies only to solid products. For liquid products, please calculate the stock solution based on the stated concentration and/or density.

Reference

Barsyte-Lovejoy D, et al. Proc Natl Acad Sci U S A. 2014, 111(35), 12853-12858.

Inhibitor · Natural Compounds · Compound Libraries · Recombinant Proteins

This product is for Research Use Only· Not for Human or Veterinary or Therapeutic Use

Tel:781-999-4286 E_mail:info@targetmol.com Address:34 Washington Street,Wellesley Hills,MA 02481