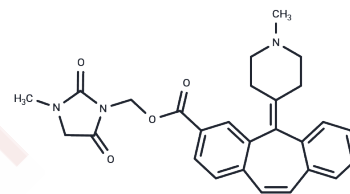


L 646462

## Chemical Properties

CAS No. : 89149-85-9  
 Formula: C<sub>27</sub>H<sub>27</sub>N<sub>3</sub>O<sub>4</sub>  
 Molecular Weight: 457.52  
 Storage: Powder: -20°C for 3 years | In solvent: -80°C for 1 year  
 Actual storage temperature shall be subject to the COA.



## Biological Description

Description	L 646462 is an antidopaminergic agent.
Targets(IC50)	Others,5-HT Receptor,Dopamine Receptor

## Preparing Stock Solutions

	1mg	5mg	10mg
1 mM	2.1857 mL	10.9285 mL	21.857 mL
5 mM	0.4371 mL	2.1857 mL	4.3714 mL
10 mM	0.2186 mL	1.0928 mL	2.1857 mL
50 mM	0.0437 mL	0.2186 mL	0.4371 mL

Please select the appropriate solvent to prepare the stock solution, according to the solubility of the product in different solvents. Please use it as soon as possible.

Note: The dilution table applies only to solid products. For liquid products, please calculate the stock solution based on the stated concentration and/or density.

## Reference

Williams M, Martin GE, Remy DC, Hichens M, Mangel AW, Taylor DA, Yarbrough GG, Bendesky RJ, King SW, Robinson JL, et al. L-646,462, a cyproheptadine-related antagonist of dopamine and serotonin with selectivity for peripheral systems. J Pharmacol Exp Ther. 1984 Jun;229(3):775-81. PubMed PMID: 6547178.

Inhibitor · Natural Compounds · Compound Libraries · Recombinant Proteins

This product is for Research Use Only· Not for Human or Veterinary or Therapeutic Use

Tel:781-999-4286 E\_mail:info@targetmol.com Address:34 Washington Street,Wellesley Hills,MA 02481