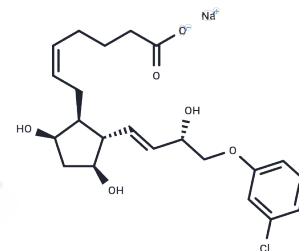


Cloprostenol sodium salt

Chemical Properties

CAS No. :	55028-72-3
Formula:	C ₂₂ H ₂₈ ClNaO ₆
Molecular Weight:	446.9
Storage:	Pure form: -20°C for 3 years In solvent: -80°C for 1 year Actual storage temperature shall be subject to the COA.



Biological Description

Description	Cloprostenol sodium salt (ICI 80996 sodium salt) is a more water-soluble, crystalline form of cloprostenol compared to the free acid and is a synthetic analog of prostaglandin F ₂ α.
Targets(IC50)	Prostaglandin Receptor

Solubility Information

Solubility	H ₂ O: 115 mg/mL (257.33 mM), Sonication is recommended. (< 1 mg/ml refers to the product slightly soluble or insoluble)
------------	--

Preparing Stock Solutions

	1mg	5mg	10mg
1 mM	2.2376 mL	11.1882 mL	22.3764 mL
5 mM	0.4475 mL	2.2376 mL	4.4753 mL
10 mM	0.2238 mL	1.1188 mL	2.2376 mL
50 mM	0.0448 mL	0.2238 mL	0.4475 mL

Please select the appropriate solvent to prepare the stock solution, according to the solubility of the product in different solvents. Please use it as soon as possible.

Note: The dilution table applies only to solid products. For liquid products, please calculate the stock solution based on the stated concentration and/or density.

Reference

- Salazar H , Furr B J A , Smith G K , et al. Luteolytic Effects of a Prostaglandin Analogue, Cloprostenol (ICI 80,996), in Rats: Ultrastructural and Biochemical Observations[J]. *Biology of Reproduction*, 1976, 14(4):458.
- Emilie P , Jean-Christophe P , Loubeau Gaëlle, et al. Aldose Reductases Influence Prostaglandin F₂α Levels and Adipocyte Differentiation in Male Mouse and Human Species[J]. *Endocrinology*(5):5.

Inhibitor · Natural Compounds · Compound Libraries · Recombinant Proteins

This product is for Research Use Only · Not for Human or Veterinary or Therapeutic Use

Tel:781-999-4286 E_mail:info@targetmol.com Address:34 Washington Street,Wellesley Hills,MA 02481