

Fluoxetine succinate ester

Chemical Properties

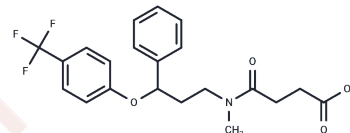
CAS No. : 1026723-45-4

Formula: C₂₁H₂₂F₃N₂O₄

Molecular Weight: 409.4

Storage: Powder: -20°C for 3 years | In solvent: -80°C for 1 year

Actual storage temperature shall be subject to the COA.



Biological Description

Description	Fluoxetine succinate ester is an antidepressant of the selective serotonin reuptake inhibitor (SSRI) class. It is used for the treatment of major depressive disorder, obsessive-compulsive disorder, bulimia nervosa, panic disorder, and premenstrual dysphoric disorder.
Targets(IC50)	Others

Preparing Stock Solutions

	1mg	5mg	10mg
1 mM	2.4426 mL	12.213 mL	24.426 mL
5 mM	0.4885 mL	2.4426 mL	4.8852 mL
10 mM	0.2443 mL	1.2213 mL	2.4426 mL
50 mM	0.0489 mL	0.2443 mL	0.4885 mL

Please select the appropriate solvent to prepare the stock solution, according to the solubility of the product in different solvents. Please use it as soon as possible.

Note: The dilution table applies only to solid products. For liquid products, please calculate the stock solution based on the stated concentration and/or density.

Inhibitor · Natural Compounds · Compound Libraries · Recombinant Proteins

This product is for Research Use Only · Not for Human or Veterinary or Therapeutic Use

Tel:781-999-4286

E_mail:info@targetmol.com

Address:34 Washington Street,Wellesley Hills,MA 02481