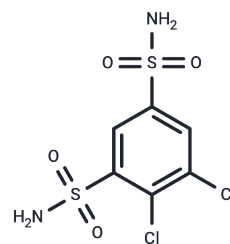


Dichlorphenamide

Chemical Properties

CAS No. :	120-97-8
Formula:	C ₆ H ₆ Cl ₂ N ₂ O ₄ S ₂
Molecular Weight:	305.16
Storage:	Powder: -20°C for 3 years In solvent: -80°C for 1 year Actual storage temperature shall be subject to the COA.



Biological Description

Description	Dichlorphenamide (Diclofenamide) is a carbonic anhydrase inhibitor that is used in the treatment of glaucoma.
Targets(IC50)	Carbonic Anhydrase

Solubility Information

Solubility	H ₂ O: < 1 mg/mL (insoluble or slightly soluble), Ethanol: 31 mg/mL (101.59 mM),Sonication is recommended. DMSO: 55 mg/mL (180.23 mM),Sonication is recommended. (< 1 mg/ml refers to the product slightly soluble or insoluble)
In vivo Formulation	10% DMSO+40% PEG300+5% Tween 80+45% Saline: 2 mg/mL (6.55 mM),Sonication is recommended. <i>Please add the solvents sequentially, clarifying the solution as much as possible before adding the next one. Dissolve by heating and/or sonication if necessary. Working solution is recommended to be prepared and used immediately. The formulation provided above is for reference purposes only. In vivo formulations may vary and should be modified based on specific experimental conditions.</i>

Preparing Stock Solutions

	1mg	5mg	10mg
1 mM	3.277 mL	16.3848 mL	32.7697 mL
5 mM	0.6554 mL	3.277 mL	6.5539 mL
10 mM	0.3277 mL	1.6385 mL	3.277 mL
50 mM	0.0655 mL	0.3277 mL	0.6554 mL

Please select the appropriate solvent to prepare the stock solution, according to the solubility of the product in different solvents. Please use it as soon as possible.

Note: The dilution table applies only to solid products. For liquid products, please calculate the stock solution based on the stated concentration and/or density.

Reference

Greig SL. *Drugs*. 2016 Mar;76(4):501-7.

Fontaine B, Phillips LH 2nd. *Neurology*. 2016 Feb 10.

Inhibitor · Natural Compounds · Compound Libraries · Recombinant Proteins

This product is for Research Use Only · Not for Human or Veterinary or Therapeutic Use

Tel: 781-999-4286 E_mail: info@targetmol.com Address: 34 Washington Street, Wellesley Hills, MA 02481