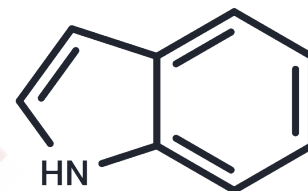


## Indole

## Chemical Properties

CAS No. :	120-72-9
Formula:	C <sub>8</sub> H <sub>7</sub> N
Molecular Weight:	117.15
Storage:	Powder: -20°C for 3 years   In solvent: -80°C for 1 year <small>Actual storage temperature shall be subject to the COA.</small>



## Biological Description

Description	Indole has a bicyclic structure, consisting of a six-membered benzene ring fused to a five-membered nitrogen-containing pyrrole ring. It can be produced by bacteria as a degradation product of the amino acid tryptophan. It occurs naturally in human feces and has an intense fecal smell. At very low concentrations, however, it has a flowery smell, and is a constituent of many flower scents (such as orange blossoms) and perfumes.
Targets(IC50)	Endogenous Metabolite

## Solubility Information

Solubility	DMSO: 60 mg/mL (512.16 mM),Sonication is recommended. Ethanol: 100 mg/mL (853.61 mM),Sonication is recommended. H2O: 3.52 mg/mL (30.05 mM),Sonication is recommended. (< 1 mg/ml refers to the product slightly soluble or insoluble)
In vivo Formulation	10% DMSO+40% PEG300+5% Tween 80+45% Saline: 2 mg/mL (17.07 mM),Sonication is recommended. <i>Please add the solvents sequentially, clarifying the solution as much as possible before adding the next one. Dissolve by heating and/or sonication if necessary. Working solution is recommended to be prepared and used immediately. The formulation provided above is for reference purposes only. In vivo formulations may vary and should be modified based on specific experimental conditions.</i>

### Preparing Stock Solutions

---

	<b>1mg</b>	<b>5mg</b>	<b>10mg</b>
1 mM	8.5361 mL	42.6803 mL	85.3606 mL
5 mM	1.7072 mL	8.5361 mL	17.0721 mL
10 mM	0.8536 mL	4.268 mL	8.5361 mL
50 mM	0.1707 mL	0.8536 mL	1.7072 mL

---

Please select the appropriate solvent to prepare the stock solution, according to the solubility of the product in different solvents. Please use it as soon as possible.

Note: The dilution table applies only to solid products. For liquid products, please calculate the stock solution based on the stated concentration and/or density.

### Reference

Raw I, et al. Catecholamines and congenital pain insensitivity. Braz J Med Biol Res. 1984;17(3-4):271-9.

**Inhibitor · Natural Compounds · Compound Libraries · Recombinant Proteins**

This product is for Research Use Only · Not for Human or Veterinary or Therapeutic Use

Tel:781-999-4286 E\_mail:info@targetmol.com Address:34 Washington Street,Wellesley Hills,MA 02481