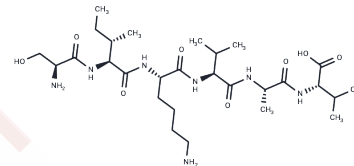


Hexapeptide-10

Chemical Properties

CAS No. :	146439-94-3
Formula:	C ₂₈ H ₅₃ N ₇ O ₈
Molecular Weight:	615.76
Storage:	Keep away from moisture Powder: -20°C for 3 years In solvent: -80°C for 1 year <small>Actual storage temperature shall be subject to the COA.</small>



Biological Description

Description	Hexapeptide-10 is a synthetic peptide. It increases the synthesis of laminin V and α 6-integrin to promote cell binding, with extraordinary visible skin restructuring and firming abilities.
Targets(IC50)	Amino Acids and Derivatives

Preparing Stock Solutions

	1mg	5mg	10mg
1 mM	1.624 mL	8.120 mL	16.2401 mL
5 mM	0.3248 mL	1.624 mL	3.248 mL
10 mM	0.1624 mL	0.812 mL	1.624 mL
50 mM	0.0325 mL	0.1624 mL	0.3248 mL

Please select the appropriate solvent to prepare the stock solution, according to the solubility of the product in different solvents. Please use it as soon as possible.

Note: The dilution table applies only to solid products. For liquid products, please calculate the stock solution based on the stated concentration and/or density.

Reference

- Sklirou AD, Ralli M, Dominguez M, Papassideri I, Skaltsounis AL, Trougkos IP. Hexapeptide-11 is a novel modulator of the proteostasis network in human diploid fibroblasts. *Redox Biol.* 2015 Aug;5:205-15. doi: 10.1016/j.redox.2015.04.010. Epub 2015 Apr 29. PubMed PMID: 25974626; PubMed Central PMCID: PMC4434199.
- Kraeling ME, Zhou W, Wang P, Ogunsola OA. In vitro skin penetration of acetyl hexapeptide-8 from a cosmetic formulation. *Cutan Ocul Toxicol.* 2015 Mar;34(1):46-52. doi: 10.3109/15569527.2014.894521. Epub 2014 Apr 22. PubMed PMID: 24754410.
- Hoppel M, Reznicek G, Kählig H, Kotisch H, Resch GP, Valenta C. Topical delivery of acetyl hexapeptide-8 from different emulsions: influence of emulsion composition and internal structure. *Eur J Pharm Sci.* 2015 Feb 20;68:27-35. doi: 10.1016/j.ejps.2014.12.006. Epub 2014 Dec 9. PubMed PMID: 25497319.
- Chang Q, Zhang L, He C, Zhang B, Zhang J, Liu B, Zeng N, Zhu Z. HOXB9 induction of mesenchymal-to-epithelial transition in gastric carcinoma is negatively regulated by its hexapeptide motif. *Oncotarget.* 2015 Dec 15;6(40):42838-53. doi: 10.18632/oncotarget.5814. PubMed PMID: 26536658; PubMed Central PMCID: PMC4767475.

Inhibitor · Natural Compounds · Compound Libraries · Recombinant Proteins

This product is for Research Use Only. Not for Human or Veterinary or Therapeutic Use

Tel:781-999-4286 E_mail:info@targetmol.com Address:34 Washington Street,Wellesley Hills,MA 02481