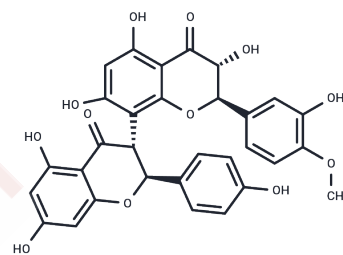


Kolaflavanone

Chemical Properties

CAS No. :	68705-66-8
Formula:	C ₃₁ H ₂₄ O ₁₂
Molecular Weight:	588.52
Storage:	Powder: -20°C for 3 years In solvent: -80°C for 1 year Actual storage temperature shall be subject to the COA.



Biological Description

Description	Kolaflavanone is a defatted methanolic extract.
Targets(IC50)	Others

Preparing Stock Solutions

	1mg	5mg	10mg
1 mM	1.6992 mL	8.4959 mL	16.9918 mL
5 mM	0.3398 mL	1.6992 mL	3.3984 mL
10 mM	0.1699 mL	0.8496 mL	1.6992 mL
50 mM	0.034 mL	0.1699 mL	0.3398 mL

Please select the appropriate solvent to prepare the stock solution, according to the solubility of the product in different solvents. Please use it as soon as possible.

Note: The dilution table applies only to solid products. For liquid products, please calculate the stock solution based on the stated concentration and/or density.

Reference

Iwu MM. Antihepatotoxic constituents of Garcinia kola seeds. *Experientia*. 1985 May 15;41(5):699-700. PubMed PMID: 3838940.

Tshibangu PT, Kapepula PM, Kapinga MJK, Luona HK, Ngombe NK, Kalenda DT, Jansen O, Wauters JN, Tits M, Angenot L, Rozet E, Hubert P, Marini RD, Frédéric M. Fingerprinting and validation of a LC-DAD method for the analysis of biflavanones in Garcinia kola-based antimalarial improved traditional medicines. *J Pharm Biomed Anal*. 2016 Sep 5;128:382-390. doi: 10.1016/j.jpba.2016.04.042. Epub 2016 Jun 9. PubMed PMID: 27343901.

Okunji CO, Ware TA, Hicks RP, Iwu MM, Skanchy DJ. Capillary electrophoresis determination of biflavanones from Garcinia kola in three traditional African medicinal formulations. *Planta Med*. 2002 May;68(5):440-4. PubMed PMID: 12058322.

Kolawole AN, Akinladejo VT, Elekofehinti OO, Akinmoladun AC, Kolawole AO. Experimental and computational modeling of interaction of kolaviron-kolaflavanone with aldehyde dehydrogenase. *Bioorg Chem*. 2018 Aug;78:68-79. doi: 10.1016/j.bioorg.2018.02.012. Epub 2018 Feb 27. PubMed PMID: 29533216.

Inhibitor · Natural Compounds · Compound Libraries · Recombinant Proteins

This product is for Research Use Only · Not for Human or Veterinary or Therapeutic Use

Tel:781-999-4286 E_mail:info@targetmol.com Address:34 Washington Street,Wellesley Hills,MA 02481