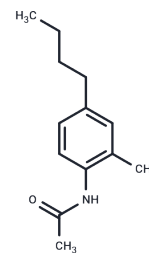


SMIP004

Chemical Properties

CAS No. :	143360-00-3
Formula:	C ₁₃ H ₁₉ NO
Molecular Weight:	205.3
Storage:	Powder: -20°C for 3 years In solvent: -80°C for 1 year Actual storage temperature shall be subject to the COA.



Biological Description

Description	SMIP004 is an SKP2 E3 ligase inhibitor. SMIP004 is a cancer cell-selective apoptosis inducer of human prostate cancer cells.
Targets(IC50)	Apoptosis,E1/E2/E3 Enzyme
In vitro	SMIP004 reduces the levels of positive cell cycle regulators upregulates cyclin-dependent kinase inhibitors. It also causes G1 arrest, inhibition of colony formation in soft agar, and cell death [2].
In vivo	In SCID mice, SMIP004 effectively inhibits the growth of prostate and breast cancer xenografts [2].

Solubility Information

Solubility	DMSO: 100 mg/mL (487.09 mM),Sonication is recommended. (< 1 mg/ml refers to the product slightly soluble or insoluble)
------------	---

Preparing Stock Solutions

	1mg	5mg	10mg
1 mM	4.8709 mL	24.3546 mL	48.7092 mL
5 mM	0.9742 mL	4.8709 mL	9.7418 mL
10 mM	0.4871 mL	2.4355 mL	4.8709 mL
50 mM	0.0974 mL	0.4871 mL	0.9742 mL

Please select the appropriate solvent to prepare the stock solution, according to the solubility of the product in different solvents. Please use it as soon as possible.

Note: The dilution table applies only to solid products. For liquid products, please calculate the stock solution based on the stated concentration and/or density.

Reference

Li C, et al. SKP2 promotes breast cancer tumorigenesis and radiation tolerance through PDCD4 ubiquitination. J Exp Clin Cancer Res. 2019 Feb 13;38(1):76.

Rico-Bautista E, Zhu W, Kitada S, Small Molecule-Induced Mitochondrial Disruption Directs Prostate Cancer Inhibition via UPR Signaling. Oncotarget. 2013 Jul 14.

Inhibitor · Natural Compounds · Compound Libraries · Recombinant Proteins

This product is for Research Use Only · Not for Human or Veterinary or Therapeutic Use

Tel:781-999-4286 E_mail:info@targetmol.com Address:34 Washington Street,Wellesley Hills,MA 02481