

Metaldehyde

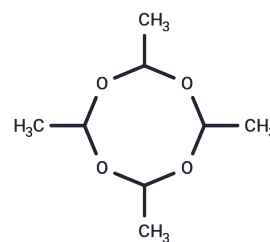
Chemical Properties

CAS No. : 108-62-3

Formula: C₈H₁₆O₄

Molecular Weight: 176.21

Storage: Keep away from direct sunlight, Keep away from moisture, Store at low temperature
 Powder: -20°C for 3 years | In solvent: -80°C for 1 year
Actual storage temperature shall be subject to the COA.



Biological Description

Description	Metaldehyde (Metacetaldehyde) is an agriculturally used molluscicide that induces DNA fragmentation in cells.
Targets(IC50)	Others

Solubility Information

Solubility	DMSO: 1 mg/mL(5.68 mM), Sonication is recommended. (< 1 mg/ml refers to the product slightly soluble or insoluble)
------------	---

Preparing Stock Solutions

	1mg	5mg	10mg
1 mM	5.675 mL	28.3752 mL	56.7505 mL
5 mM	1.135 mL	5.675 mL	11.3501 mL
10 mM	0.5675 mL	2.8375 mL	5.675 mL
50 mM	0.1135 mL	0.5675 mL	1.135 mL

Please select the appropriate solvent to prepare the stock solution, according to the solubility of the product in different solvents. Please use it as soon as possible.

Note: The dilution table applies only to solid products. For liquid products, please calculate the stock solution based on the stated concentration and/or density.

Reference

Salvio C, et al. Effects of granulated baits on meso and macrofauna in soybean soil system. J Environ Biol. 2011 Nov;32(6):793-9.

Li Z, et al. Degradation of metaldehyde in water by nanoparticle catalysts and powdered activated carbon. Environ Sci Pollut Res Int. 2017 Jul;24(21):17861-17873.

Inhibitor · Natural Compounds · Compound Libraries · Recombinant Proteins

This product is for Research Use Only · Not for Human or Veterinary or Therapeutic Use

Tel:781-999-4286 E_mail:info@targetmol.com Address:34 Washington Street,Wellesley Hills,MA 02481