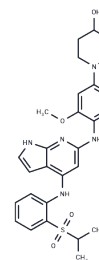


Mps1-IN-1

Chemical Properties

CAS No. :	1125593-20-5
Formula:	C ₂₈ H ₃₃ N ₅ O ₄ S
Molecular Weight:	535.66
Storage:	Powder: -20°C for 3 years In solvent: -80°C for 1 year Actual storage temperature shall be subject to the COA.



Biological Description

Description	Mps1-IN-1 is a potent, selective, and ATP-competitive inhibitor of Mps1 kinase (IC ₅₀ : 367 nM).
Targets(IC ₅₀)	Others, Kinesin
In vitro	Mps1-IN-1 is a potent, selective, and ATP-competitive inhibitor of Mps1 kinase with IC ₅₀ and K _d values of 367 nM and 27 nM, respectively. It also exhibits high affinity for ALK and LTK, with K _d values of 21 nM and 39 nM, respectively[1].

Solubility Information

Solubility	DMSO: 39 mg/mL (72.81 mM), Sonication is recommended. (< 1 mg/ml refers to the product slightly soluble or insoluble)
In vivo Formulation	10% DMSO+40% PEG300+5% Tween 80+45% Saline: 2 mg/mL (3.73 mM), Sonication is recommended. <i>Please add the solvents sequentially, clarifying the solution as much as possible before adding the next one. Dissolve by heating and/or sonication if necessary. Working solution is recommended to be prepared and used immediately. The formulation provided above is for reference purposes only. In vivo formulations may vary and should be modified based on specific experimental conditions.</i>

Preparing Stock Solutions

	1mg	5mg	10mg
1 mM	1.8669 mL	9.3343 mL	18.6686 mL
5 mM	0.3734 mL	1.8669 mL	3.7337 mL
10 mM	0.1867 mL	0.9334 mL	1.8669 mL
50 mM	0.0373 mL	0.1867 mL	0.3734 mL

Please select the appropriate solvent to prepare the stock solution, according to the solubility of the product in different solvents. Please use it as soon as possible.

Note: The dilution table applies only to solid products. For liquid products, please calculate the stock solution based on the stated concentration and/or density.

Reference

Kwiatkowski N, et al. Small-molecule kinase inhibitors provide insight into Mps1 cell cycle function. Nat Chem Biol. 2010 May;6(5):359-68.

Inhibitor · Natural Compounds · Compound Libraries · Recombinant Proteins

This product is for Research Use Only · Not for Human or Veterinary or Therapeutic Use

Tel:781-999-4286 E_mail:info@targetmol.com Address:34 Washington Street,Wellesley Hills,MA 02481