

L 163255

Chemical Properties

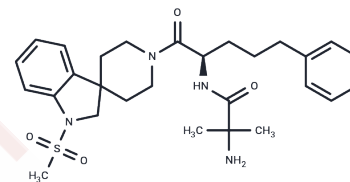
CAS No. : 159634-54-5

Formula: C₂₈H₃₈N₄O₄S

Molecular Weight: 526.69

Storage: Powder: -20°C for 3 years | In solvent: -80°C for 1 year

Actual storage temperature shall be subject to the COA.



Biological Description

Description	L 163255 is a type of growth hormone secretagogue (GHS).
Targets(IC50)	Others,GHSR

Preparing Stock Solutions

	1mg	5mg	10mg
1 mM	1.8987 mL	9.4933 mL	18.9865 mL
5 mM	0.3797 mL	1.8987 mL	3.7973 mL
10 mM	0.1899 mL	0.9493 mL	1.8987 mL
50 mM	0.038 mL	0.1899 mL	0.3797 mL

Please select the appropriate solvent to prepare the stock solution, according to the solubility of the product in different solvents. Please use it as soon as possible.

Note: The dilution table applies only to solid products. For liquid products, please calculate the stock solution based on the stated concentration and/or density.

Reference

Liantonio A, Gramegna G, Carbonara G, Sblendorio VT, Pierno S, Fraysse B, Giannuzzi V, Rizzi L, Torsello A, Camerino DC. Growth hormone secretagogues exert differential effects on skeletal muscle calcium homeostasis in male rats depending on the peptidyl/nonpeptidyl structure. *Endocrinology*. 2013 Oct;154(10):3764-75. doi: 10.1210/en.2013-1334. Epub 2013 Jul 8. PubMed PMID: 23836033.

Luque RM, Peinado JR, Gracia-Navarro F, Broglio F, Ghigo E, Kineman RD, Malagón MM, Castaño JP. Cortistatin mimics somatostatin by inducing a dual, dose-dependent stimulatory and inhibitory effect on growth hormone secretion in somatotropes. *J Mol Endocrinol*. 2006 Jun;36(3):547-56. PubMed PMID: 16720722.

Smith RG. Development of growth hormone secretagogues. *Endocr Rev*. 2005 May;26(3):346-60. Epub 2005 Apr 6. Review. PubMed PMID: 15814848.

Thompson NM, Gill DA, Davies R, Loveridge N, Houston PA, Robinson IC, Wells T. Ghrelin and des-octanoyl ghrelin promote adipogenesis directly in vivo by a mechanism independent of the type 1a growth hormone secretagogue receptor. *Endocrinology*. 2004 Jan;145(1):234-42. Epub 2003 Oct 9. PubMed PMID: 14551228.

Inhibitor · Natural Compounds · Compound Libraries · Recombinant Proteins

This product is for Research Use Only · Not for Human or Veterinary or Therapeutic Use

Tel:781-999-4286 E_mail:info@targetmol.com Address:34 Washington Street,Wellesley Hills,MA 02481