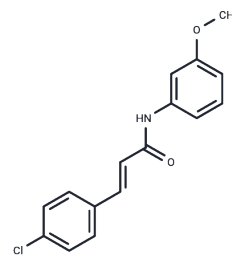


SB-366791

Chemical Properties

CAS No. : 472981-92-3
 Formula: C₁₆H₁₄ClNO₂
 Molecular Weight: 287.74
 Storage: Powder: -20°C for 3 years | In solvent: -80°C for 1 year
 Actual storage temperature shall be subject to the COA.



Biological Description

Description	SB-366791 is a new and selective cinnamide TRPV1 antagonist.
Targets(IC50)	TRP/TRPV Channel

Solubility Information

Solubility	DMSO: 250 mg/mL (868.84 mM),Sonication is recommended. Ethanol: 2.9 mg/mL (10.08 mM),Sonication is recommended. (< 1 mg/ml refers to the product slightly soluble or insoluble)
In vivo Formulation	10% DMSO+40% PEG300+5% Tween 80+45% Saline: 2 mg/mL (6.95 mM),Sonication is recommended. <i>Please add the solvents sequentially, clarifying the solution as much as possible before adding the next one. Dissolve by heating and/or sonication if necessary. Working solution is recommended to be prepared and used immediately. The formulation provided above is for reference purposes only. In vivo formulations may vary and should be modified based on specific experimental conditions.</i>

Preparing Stock Solutions

	1mg	5mg	10mg
1 mM	3.4754 mL	17.3768 mL	34.7536 mL
5 mM	0.6951 mL	3.4754 mL	6.9507 mL
10 mM	0.3475 mL	1.7377 mL	3.4754 mL
50 mM	0.0695 mL	0.3475 mL	0.6951 mL

Please select the appropriate solvent to prepare the stock solution, according to the solubility of the product in different solvents. Please use it as soon as possible.

Note: The dilution table applies only to solid products. For liquid products, please calculate the stock solution based on the stated concentration and/or density.

Reference

Gunthorpe MJ, et al. Identification and characterisation of SB-366791, a potent and selective vanilloid receptor (VR1/TRPV1) antagonist. *Neuropharmacology*. 2004 Jan;46(1):133-49.

Inhibitor · Natural Compounds · Compound Libraries · Recombinant Proteins

This product is for Research Use Only · Not for Human or Veterinary or Therapeutic Use

Tel: 781-999-4286 E_mail: info@targetmol.com Address: 34 Washington Street, Wellesley Hills, MA 02481