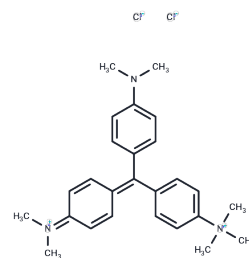


## Basic Blue 20

## Chemical Properties

CAS No. :	82-94-0
Formula:	C <sub>26</sub> H <sub>33</sub> Cl <sub>2</sub> N <sub>3</sub>
Molecular Weight:	458.47
Storage:	Powder: -20°C for 3 years   In solvent: -80°C for 1 year Actual storage temperature shall be subject to the COA.



## Biological Description

Description	Basic Blue 20, a red-emitting DNA stain, exhibits relatively narrow excitation and emission spectra, peaking at 633 nm and 677 nm, respectively. Furthermore, it is characterized by its high resistance to photobleaching [1].
Targets(IC50)	Others, Autophagy

## Preparing Stock Solutions

	1mg	5mg	10mg
1 mM	2.1812 mL	10.9058 mL	21.8117 mL
5 mM	0.4362 mL	2.1812 mL	4.3623 mL
10 mM	0.2181 mL	1.0906 mL	2.1812 mL
50 mM	0.0436 mL	0.2181 mL	0.4362 mL

Please select the appropriate solvent to prepare the stock solution, according to the solubility of the product in different solvents. Please use it as soon as possible.

Note: The dilution table applies only to solid products. For liquid products, please calculate the stock solution based on the stated concentration and/or density.

**Inhibitor · Natural Compounds · Compound Libraries · Recombinant Proteins**

This product is for Research Use Only · Not for Human or Veterinary or Therapeutic Use

Tel: 781-999-4286 E\_mail: info@targetmol.com Address: 34 Washington Street, Wellesley Hills, MA 02481