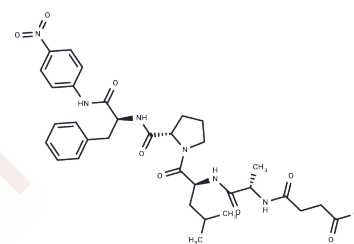


Suc-Ala-Leu-Pro-Phe-pNA

Chemical Properties

CAS No. :	128802-78-8
Formula:	C33H42N6O9
Molecular Weight:	666.72
Storage:	Keep away from moisture Powder: -20°C for 3 years In solvent: -80°C for 1 year <small>Actual storage temperature shall be subject to the COA.</small>



Biological Description

Description	Suc-Ala-Leu-Pro-Phe-pNA (Suc-ALPF-pNA), a substrate for FK-506 binding protein (FKBP) [1], is utilized to demonstrate the complex interactions essential for targeted biochemical assays.
Targets(IC50)	FKBP

Preparing Stock Solutions

	1mg	5mg	10mg
1 mM	1.4999 mL	7.4994 mL	14.9988 mL
5 mM	0.300 mL	1.4999 mL	2.9998 mL
10 mM	0.150 mL	0.7499 mL	1.4999 mL
50 mM	0.030 mL	0.150 mL	0.300 mL

Please select the appropriate solvent to prepare the stock solution, according to the solubility of the product in different solvents. Please use it as soon as possible.

Note: The dilution table applies only to solid products. For liquid products, please calculate the stock solution based on the stated concentration and/or density.

Inhibitor · Natural Compounds · Compound Libraries · Recombinant Proteins

This product is for Research Use Only · Not for Human or Veterinary or Therapeutic Use

Tel:781-999-4286 E_mail:info@targetmol.com Address:34 Washington Street,Wellesley Hills,MA 02481