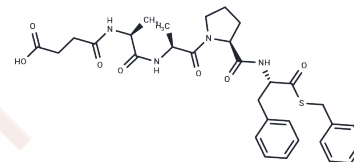


Suc-Ala-Ala-Pro-Phe-SBzl

Chemical Properties

CAS No. :	80651-95-2
Formula:	C ₃₁ H ₃₈ N ₄ O ₇ S
Molecular Weight:	610.72
Storage:	Keep away from moisture Powder: -20°C for 3 years In solvent: -80°C for 1 year <small>Actual storage temperature shall be subject to the COA.</small>



Biological Description

Description	Suc-Ala-Ala-Pro-Phe-SBzl serves as a substrate for rat intestinal mast cell protease (RMCP I), rat skeletal muscle mast cell protease (RMCP II), and Chymotrypsin, and undergoes hydrolysis by glycine (R208G) [1] [2].
Targets(IC50)	Proteasome

Preparing Stock Solutions

	1mg	5mg	10mg
1 mM	1.6374 mL	8.1871 mL	16.3741 mL
5 mM	0.3275 mL	1.6374 mL	3.2748 mL
10 mM	0.1637 mL	0.8187 mL	1.6374 mL
50 mM	0.0327 mL	0.1637 mL	0.3275 mL

Please select the appropriate solvent to prepare the stock solution, according to the solubility of the product in different solvents. Please use it as soon as possible.

Note: The dilution table applies only to solid products. For liquid products, please calculate the stock solution based on the stated concentration and/or density.

Inhibitor · Natural Compounds · Compound Libraries · Recombinant Proteins

This product is for Research Use Only · Not for Human or Veterinary or Therapeutic Use

Tel:781-999-4286 E_mail:info@targetmol.com Address:34 Washington Street,Wellesley Hills,MA 02481