

## Hippuryl-His-Leu-OH

## Chemical Properties

CAS No. : 31373-65-6

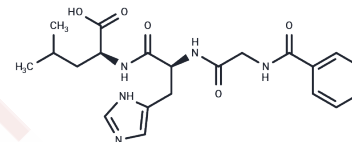
Formula: C<sub>21</sub>H<sub>27</sub>N<sub>5</sub>O<sub>5</sub>

Molecular Weight: 429.47

Keep away from moisture

Storage: Powder: -20°C for 3 years | In solvent: -80°C for 1 year

Actual storage temperature shall be subject to the COA.



## Biological Description

Description	Hippuryl-His-Leu-OH serves as a substrate to measure angiotensin I converting enzyme activity. Upon its cleavage, the resultant His-Leu moiety reacts with o-phthaldialdehyde or Fluorescamine, facilitating fluorescence detection [1] [2] [3].
Targets(IC50)	Amino Acids and Derivatives,Angiotensin-converting Enzyme (ACE)

## Preparing Stock Solutions

	1mg	5mg	10mg
1 mM	2.3285 mL	11.6423 mL	23.2845 mL
5 mM	0.4657 mL	2.3285 mL	4.6569 mL
10 mM	0.2328 mL	1.1642 mL	2.3285 mL
50 mM	0.0466 mL	0.2328 mL	0.4657 mL

Please select the appropriate solvent to prepare the stock solution, according to the solubility of the product in different solvents. Please use it as soon as possible.

Note: The dilution table applies only to solid products. For liquid products, please calculate the stock solution based on the stated concentration and/or density.

Inhibitor · Natural Compounds · Compound Libraries · Recombinant Proteins

This product is for Research Use Only · Not for Human or Veterinary or Therapeutic Use

Tel:781-999-4286 E\_mail:info@targetmol.com Address:34 Washington Street,Wellesley Hills,MA 02481