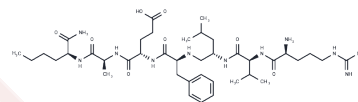


## HIV-IN peptide

## Chemical Properties

CAS No. :	167875-35-6
Formula:	C40H69N11O8
Molecular Weight:	832.04
Storage:	Keep away from moisture Powder: -20°C for 3 years   In solvent: -80°C for 1 year <small>Actual storage temperature shall be subject to the COA.</small>



## Biological Description

Description	HIV-IN peptide is a competitive inhibitor of HIV-1 protease ( $K_i = 50$ nM) [1].
Targets(IC50)	HIV Protease

## Preparing Stock Solutions

	1mg	5mg	10mg
1 mM	1.2019 mL	6.0093 mL	12.0187 mL
5 mM	0.2404 mL	1.2019 mL	2.4037 mL
10 mM	0.1202 mL	0.6009 mL	1.2019 mL
50 mM	0.024 mL	0.1202 mL	0.2404 mL

Please select the appropriate solvent to prepare the stock solution, according to the solubility of the product in different solvents. Please use it as soon as possible.

Note: The dilution table applies only to solid products. For liquid products, please calculate the stock solution based on the stated concentration and/or density.

**Inhibitor · Natural Compounds · Compound Libraries · Recombinant Proteins**

This product is for Research Use Only · Not for Human or Veterinary or Therapeutic Use

Tel: 781-999-4286 E\_mail: info@targetmol.com Address: 34 Washington Street, Wellesley Hills, MA 02481