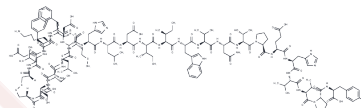


Endothelin-1 (1-31) (Human)

Chemical Properties

CAS No. :	133972-52-8
Formula:	C162H236N38O47S5
Molecular Weight:	3628.16
Storage:	Keep away from moisture Powder: -20°C for 3 years In solvent: -80°C for 1 year <small>Actual storage temperature shall be subject to the COA.</small>



Biological Description

Description	Endothelin-1 (1-31) (Human) is a potent vasoconstrictor and hypertensive agent, derived from the specific hydrolysis of big ET-1 by chymase [1].
Targets(IC50)	ERK

Preparing Stock Solutions

	1mg	5mg	10mg
1 mM	0.2756 mL	1.3781 mL	2.7562 mL
5 mM	0.0551 mL	0.2756 mL	0.5512 mL
10 mM	0.0276 mL	0.1378 mL	0.2756 mL
50 mM	0.0055 mL	0.0276 mL	0.0551 mL

Please select the appropriate solvent to prepare the stock solution, according to the solubility of the product in different solvents. Please use it as soon as possible.

Note: The dilution table applies only to solid products. For liquid products, please calculate the stock solution based on the stated concentration and/or density.

Inhibitor · Natural Compounds · Compound Libraries · Recombinant Proteins

This product is for Research Use Only · Not for Human or Veterinary or Therapeutic Use

Tel: 781-999-4286 E_mail: info@targetmol.com Address: 34 Washington Street, Wellesley Hills, MA 02481