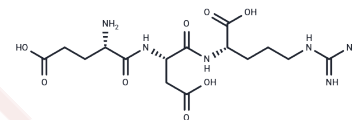


## Pinealon

## Chemical Properties

CAS No. :	175175-23-2
Formula:	C15H26N6O8
Molecular Weight:	418.4
Storage:	Keep away from moisture Powder: -20°C for 3 years   In solvent: -80°C for 1 year <small>Actual storage temperature shall be subject to the COA.</small>



## Biological Description

Description	Pinealon is a 3-amino acid peptide that shows neuroprotective properties by preventing reactive oxygen species (ROS) accumulation and suppressing the activation of ERK 1/2. Pinealon stimulates the functional activity of the main cellular elements of brain tissue, reduces the level of spontaneous cell death, and protects rat offspring from prenatal hyperhomocysteinemia [1] [2] [3].
Targets(IC50)	ROS Kinase

## Preparing Stock Solutions

	1mg	5mg	10mg
1 mM	2.3901 mL	11.9503 mL	23.9006 mL
5 mM	0.478 mL	2.3901 mL	4.7801 mL
10 mM	0.239 mL	1.195 mL	2.3901 mL
50 mM	0.0478 mL	0.239 mL	0.478 mL

Please select the appropriate solvent to prepare the stock solution, according to the solubility of the product in different solvents. Please use it as soon as possible.

Note: The dilution table applies only to solid products. For liquid products, please calculate the stock solution based on the stated concentration and/or density.

**Inhibitor · Natural Compounds · Compound Libraries · Recombinant Proteins**

This product is for Research Use Only · Not for Human or Veterinary or Therapeutic Use

Tel:781-999-4286 E\_mail:info@targetmol.com Address:34 Washington Street,Wellesley Hills,MA 02481