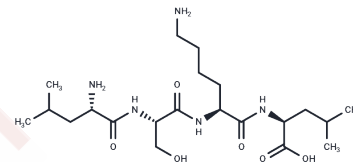


## H-Leu-Ser-Lys-Leu-OH

## Chemical Properties

CAS No. :	162559-45-7
Formula:	C <sub>21</sub> H <sub>41</sub> N <sub>5</sub> O <sub>6</sub>
Molecular Weight:	459.58
Storage:	Keep away from moisture Powder: -20°C for 3 years   In solvent: -80°C for 1 year <small>Actual storage temperature shall be subject to the COA.</small>



## Biological Description

Description	H-Leu-Ser-Lys-Leu-OH (LSYL), a latency-associated peptide located at the amino terminus of LAP, inhibits TGF- $\beta$ 1 activation by binding with KRFK, thereby obstructing TGF- $\beta$ 1 signal transduction and inhibiting the progression of hepatic damage and fibrosis [1].
Targets(IC50)	TGF-beta/Smad

## Preparing Stock Solutions

	1mg	5mg	10mg
1 mM	2.1759 mL	10.8795 mL	21.759 mL
5 mM	0.4352 mL	2.1759 mL	4.3518 mL
10 mM	0.2176 mL	1.0879 mL	2.1759 mL
50 mM	0.0435 mL	0.2176 mL	0.4352 mL

Please select the appropriate solvent to prepare the stock solution, according to the solubility of the product in different solvents. Please use it as soon as possible.

Note: The dilution table applies only to solid products. For liquid products, please calculate the stock solution based on the stated concentration and/or density.

**Inhibitor · Natural Compounds · Compound Libraries · Recombinant Proteins**

This product is for Research Use Only · Not for Human or Veterinary or Therapeutic Use

Tel:781-999-4286 E\_mail:info@targetmol.com Address:34 Washington Street,Wellesley Hills,MA 02481