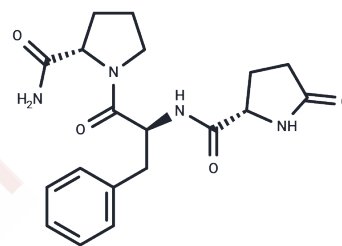


## [Phe2]-TRH

## Chemical Properties

CAS No. :	34783-35-2
Formula:	C <sub>19</sub> H <sub>24</sub> N <sub>4</sub> O <sub>4</sub>
Molecular Weight:	372.42
Storage:	Keep away from moisture Powder: -20°C for 3 years   In solvent: -80°C for 1 year <small>Actual storage temperature shall be subject to the COA.</small>



## Biological Description

Description	'[Phe2]-TRH, a thyrotropin-releasing hormone analogue, exhibits conformational similarity to Leu5-enkephalin [1].'
Targets(IC50)	Thyroid hormone receptor(THR)

## Preparing Stock Solutions

	1mg	5mg	10mg
1 mM	2.6851 mL	13.4257 mL	26.8514 mL
5 mM	0.537 mL	2.6851 mL	5.3703 mL
10 mM	0.2685 mL	1.3426 mL	2.6851 mL
50 mM	0.0537 mL	0.2685 mL	0.537 mL

Please select the appropriate solvent to prepare the stock solution, according to the solubility of the product in different solvents. Please use it as soon as possible.

Note: The dilution table applies only to solid products. For liquid products, please calculate the stock solution based on the stated concentration and/or density.

**Inhibitor · Natural Compounds · Compound Libraries · Recombinant Proteins**

This product is for Research Use Only · Not for Human or Veterinary or Therapeutic Use

Tel:781-999-4286 E\_mail:info@targetmol.com Address:34 Washington Street,Wellesley Hills,MA 02481