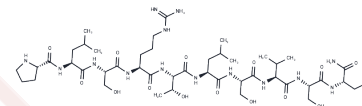


Calmodulin Dependent Protein Kinase Substrate

Chemical Properties

CAS No. :	82801-68-1
Formula:	C44H80N14O15
Molecular Weight:	1045.19
Storage:	Keep away from moisture Powder: -20°C for 3 years In solvent: -80°C for 1 year <small>Actual storage temperature shall be subject to the COA.</small>



Biological Description

Description	Calmodulin Dependent Protein Kinase Substrate is a synthetic peptide that interacts specifically with calmodulin-dependent protein kinases (CaMK) and requires calcium ions (Ca ²⁺) and calmodulin (CaM) for activation. It is utilized in studies involving protein kinase activity [1].
Targets(IC50)	CaMK

Preparing Stock Solutions

	1mg	5mg	10mg
1 mM	0.9568 mL	4.7838 mL	9.5676 mL
5 mM	0.1914 mL	0.9568 mL	1.9135 mL
10 mM	0.0957 mL	0.4784 mL	0.9568 mL
50 mM	0.0191 mL	0.0957 mL	0.1914 mL

Please select the appropriate solvent to prepare the stock solution, according to the solubility of the product in different solvents. Please use it as soon as possible.

Note: The dilution table applies only to solid products. For liquid products, please calculate the stock solution based on the stated concentration and/or density.

Inhibitor · Natural Compounds · Compound Libraries · Recombinant Proteins

This product is for Research Use Only · Not for Human or Veterinary or Therapeutic Use

Tel: 781-999-4286 E_mail: info@targetmol.com Address: 34 Washington Street, Wellesley Hills, MA 02481