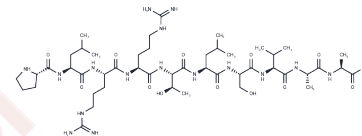


Calmodulin Dependent Protein Kinase Substrate Analog

Chemical Properties

CAS No. :	123067-01-6
Formula:	C47H87N17O12
Molecular Weight:	1082.3
Storage:	Keep away from moisture Powder: -20°C for 3 years In solvent: -80°C for 1 year <small>Actual storage temperature shall be subject to the COA.</small>



Biological Description

Description	Calmodulin-Dependent Protein Kinase Substrate Analog, a synthetic peptide substrate, is activated by Ca ²⁺ and calmodulin (CaM). It serves as a substrate for protein kinases, leveraging a dependency on Ca ²⁺ and CaM for its function [1].
Targets(IC50)	CaMK

Preparing Stock Solutions

	1mg	5mg	10mg
1 mM	0.924 mL	4.6198 mL	9.2396 mL
5 mM	0.1848 mL	0.924 mL	1.8479 mL
10 mM	0.0924 mL	0.462 mL	0.924 mL
50 mM	0.0185 mL	0.0924 mL	0.1848 mL

Please select the appropriate solvent to prepare the stock solution, according to the solubility of the product in different solvents. Please use it as soon as possible.

Note: The dilution table applies only to solid products. For liquid products, please calculate the stock solution based on the stated concentration and/or density.

Inhibitor · Natural Compounds · Compound Libraries · Recombinant Proteins

This product is for Research Use Only · Not for Human or Veterinary or Therapeutic Use

Tel: 781-999-4286 E_mail: info@targetmol.com Address: 34 Washington Street, Wellesley Hills, MA 02481