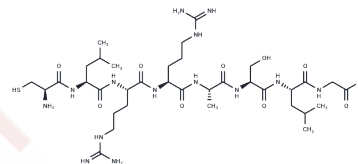


Cys-Kemptide

Chemical Properties

CAS No. :	309247-46-9
Formula:	C35H66N14O10S
Molecular Weight:	875.05
Storage:	Keep away from moisture Powder: -20°C for 3 years In solvent: -80°C for 1 year <small>Actual storage temperature shall be subject to the COA.</small>



Biological Description

Description	Cys-Kemptide, a cysteine-terminated substrate peptide, is utilized for measuring protein kinase A (PKA) activity [1].
Targets(IC50)	PKA

Preparing Stock Solutions

	1mg	5mg	10mg
1 mM	1.1428 mL	5.714 mL	11.4279 mL
5 mM	0.2286 mL	1.1428 mL	2.2856 mL
10 mM	0.1143 mL	0.5714 mL	1.1428 mL
50 mM	0.0229 mL	0.1143 mL	0.2286 mL

Please select the appropriate solvent to prepare the stock solution, according to the solubility of the product in different solvents. Please use it as soon as possible.

Note: The dilution table applies only to solid products. For liquid products, please calculate the stock solution based on the stated concentration and/or density.

Inhibitor · Natural Compounds · Compound Libraries · Recombinant Proteins

This product is for Research Use Only · Not for Human or Veterinary or Therapeutic Use

Tel:781-999-4286 E_mail:info@targetmol.com Address:34 Washington Street,Wellesley Hills,MA 02481