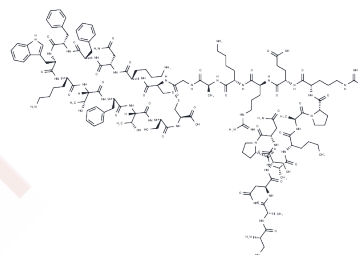


[Nle8] Somatostatin (1-28)

Chemical Properties

CAS No. :	84768-30-9
Formula:	C138H209N41O39S2
Molecular Weight:	3130.52
Storage:	Keep away from moisture Powder: -20°C for 3 years In solvent: -80°C for 1 year <small>Actual storage temperature shall be subject to the COA.</small>



Biological Description

Description	[Nle8] Somatostatin (1-28), a derivative of somatostatin (1-28) with norleucine (Nle) substituting for methionine at position 8, enhances amylase release and elevates cyclic AMP levels in pancreatic acini [1].
Targets(IC50)	Somatostatin

Preparing Stock Solutions

	1mg	5mg	10mg
1 mM	0.3194 mL	1.5972 mL	3.1944 mL
5 mM	0.0639 mL	0.3194 mL	0.6389 mL
10 mM	0.0319 mL	0.1597 mL	0.3194 mL
50 mM	0.0064 mL	0.0319 mL	0.0639 mL

Please select the appropriate solvent to prepare the stock solution, according to the solubility of the product in different solvents. Please use it as soon as possible.

Note: The dilution table applies only to solid products. For liquid products, please calculate the stock solution based on the stated concentration and/or density.

Inhibitor · Natural Compounds · Compound Libraries · Recombinant Proteins

This product is for Research Use Only · Not for Human or Veterinary or Therapeutic Use

Tel:781-999-4286 E_mail:info@targetmol.com Address:34 Washington Street,Wellesley Hills,MA 02481