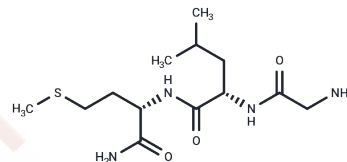


Gly-Leu-Met-NH₂

Chemical Properties

CAS No. :	4652-64-6
Formula:	C ₁₃ H ₂₆ N ₄ O ₃ S
Molecular Weight:	318.44
Storage:	Keep away from moisture Powder: -20°C for 3 years In solvent: -80°C for 1 year <small>Actual storage temperature shall be subject to the COA.</small>



Biological Description

Description	Gly-Leu-Met-NH ₂ , a C-terminal tripeptide of Substance P (Substance P), is a neuropeptide [1].
Targets(IC ₅₀)	Neurokinin receptor

Preparing Stock Solutions

	1mg	5mg	10mg
1 mM	3.1403 mL	15.7015 mL	31.4031 mL
5 mM	0.6281 mL	3.1403 mL	6.2806 mL
10 mM	0.314 mL	1.5702 mL	3.1403 mL
50 mM	0.0628 mL	0.314 mL	0.6281 mL

Please select the appropriate solvent to prepare the stock solution, according to the solubility of the product in different solvents. Please use it as soon as possible.

Note: The dilution table applies only to solid products. For liquid products, please calculate the stock solution based on the stated concentration and/or density.

Inhibitor · Natural Compounds · Compound Libraries · Recombinant Proteins

This product is for Research Use Only · Not for Human or Veterinary or Therapeutic Use

Tel: 781-999-4286 E_mail: info@targetmol.com Address: 34 Washington Street, Wellesley Hills, MA 02481