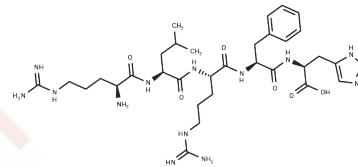


β -Bag cell peptide

Chemical Properties

CAS No. :	109024-47-7
Formula:	C33H53N13O6
Molecular Weight:	727.86
Storage:	Keep away from moisture Powder: -20°C for 3 years In solvent: -80°C for 1 year <small>Actual storage temperature shall be subject to the COA.</small>



Biological Description

Description	β -Bag cell peptide, a neuroactive peptide, elevates cyclic AMP levels and reduces the amplitudes of voltage-dependent potassium currents [1] in bag cell neurons.
Targets(IC50)	Potassium Channel

Preparing Stock Solutions

	1mg	5mg	10mg
1 mM	1.3739 mL	6.8695 mL	13.7389 mL
5 mM	0.2748 mL	1.3739 mL	2.7478 mL
10 mM	0.1374 mL	0.6869 mL	1.3739 mL
50 mM	0.0275 mL	0.1374 mL	0.2748 mL

Please select the appropriate solvent to prepare the stock solution, according to the solubility of the product in different solvents. Please use it as soon as possible.

Note: The dilution table applies only to solid products. For liquid products, please calculate the stock solution based on the stated concentration and/or density.

Inhibitor · Natural Compounds · Compound Libraries · Recombinant Proteins

This product is for Research Use Only · Not for Human or Veterinary or Therapeutic Use

Tel:781-999-4286 E_mail:info@targetmol.com Address:34 Washington Street,Wellesley Hills,MA 02481