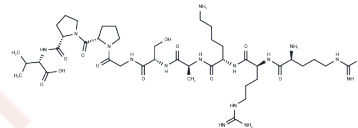


Phosphate acceptor peptide

Chemical Properties

CAS No. :	93511-94-5
Formula:	C41H74N16O11
Molecular Weight:	967.13
Storage:	Keep away from moisture Powder: -20°C for 3 years In solvent: -80°C for 1 year <small>Actual storage temperature shall be subject to the COA.</small>



Biological Description

Description	Phosphate acceptor peptide acts as a substrate for cAMP-dependent protein kinase (PKA) and serves as a weak inhibitor of protein kinase C (PKC) [1].
Targets(IC50)	PKC

Preparing Stock Solutions

	1mg	5mg	10mg
1 mM	1.034 mL	5.1699 mL	10.3399 mL
5 mM	0.2068 mL	1.034 mL	2.068 mL
10 mM	0.1034 mL	0.517 mL	1.034 mL
50 mM	0.0207 mL	0.1034 mL	0.2068 mL

Please select the appropriate solvent to prepare the stock solution, according to the solubility of the product in different solvents. Please use it as soon as possible.

Note: The dilution table applies only to solid products. For liquid products, please calculate the stock solution based on the stated concentration and/or density.

Inhibitor · Natural Compounds · Compound Libraries · Recombinant Proteins

This product is for Research Use Only · Not for Human or Veterinary or Therapeutic Use

Tel: 781-999-4286 E_mail: info@targetmol.com Address: 34 Washington Street, Wellesley Hills, MA 02481